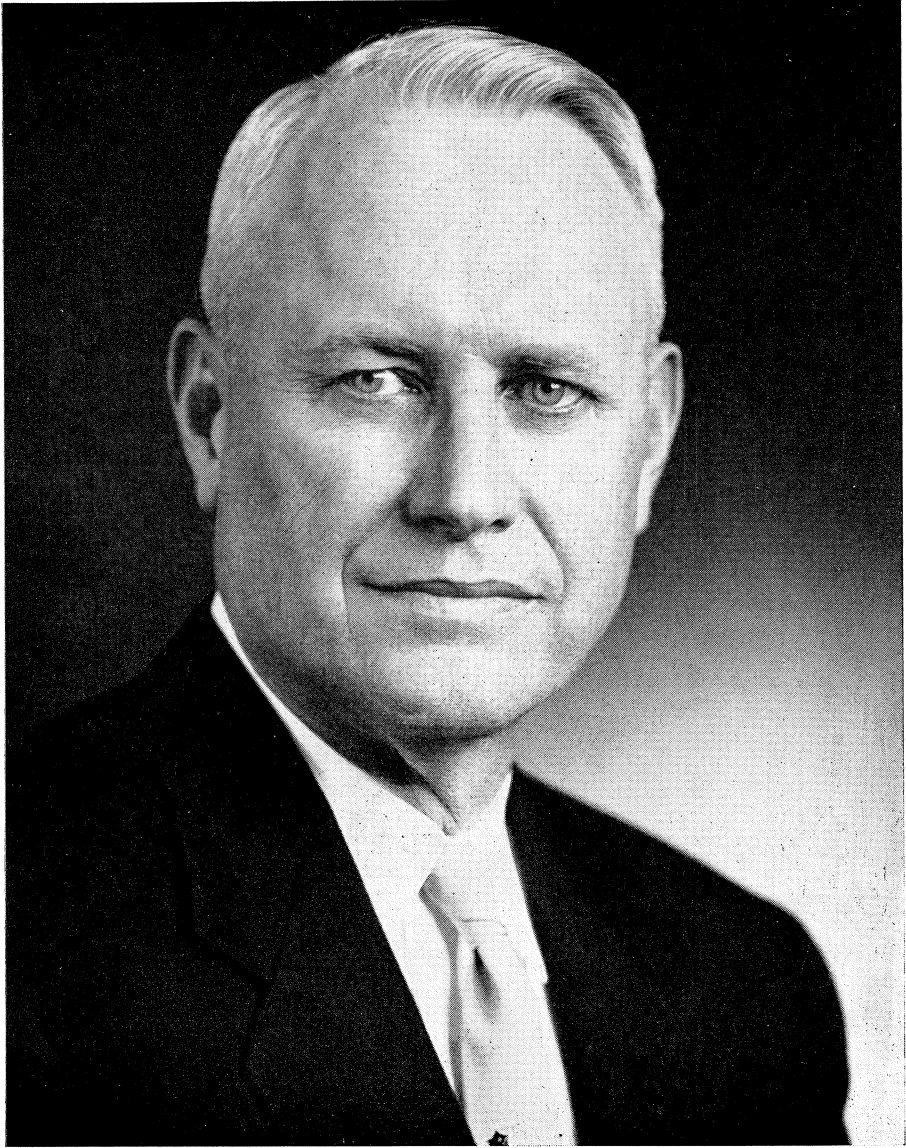


KANSAS JUDICIAL COUNCIL BULLETIN

OCTOBER, 1958

PARTS 1, 2 and 3—THIRTY-SECOND ANNUAL REPORT



JAY W. SCOVEL

President

The Bar Association of the State of Kansas

TABLE OF CONTENTS

	PAGE
Foreword	2
KANSAS NEEDS UNIFORM TRAFFIC VIOLATION PENALTIES	3
By JAY W. SCOVEL, <i>President</i> , The Bar Association of the State of Kansas	
Summary of the Work of the Supreme Court	5
Supreme Court—Thirty-one Year Summary	7
Table A-1, Roster of Judicial Officials as of July 1, 1958	10
Table A-2, Summary of District Courts, by Districts—Year Ending June 30, 1958	12
Table A-3, Summary of District Courts, by counties—Disposition of Civil Cases, Including Divorce—Year Ending June 30, 1958	17
Table A-4, Summary of District Courts, by counties—Disposition of Divorce Cases—Year Ending June 30, 1958	21
Table A-5, Summary of District Courts, by counties—Types of Civil Cases—Year Ending June 30, 1958	25
Table A-6, Summary of District Courts, State as a Whole—Types of Civil Cases Commenced	29
Table B-1, Summary of District Courts, by counties—Disposition of Criminal Cases—Year Ending June 30, 1958	30
Table B-2, Summary of District Courts, by counties—Types of Felonies—Year Ending June 30, 1958	34
Table B-3, Summary of District Courts, by counties—Types of Misdemeanors—Total of Criminal Cases—Year Ending June 30, 1958	38
Table B-4, Summary of District Courts, State as a Whole—Nature of Crimes	42
Table C-1, Probate Courts, Summary of Business Handled—Year Ending June 30, 1958	43
Table C-2, Estates of Decedents—Year Ending June 30, 1958	47
Table C-3, Guardianships and Trusts—Year Ending June 30, 1958	51
Table D-1, Disposition of Civil Cases, County Courts, Year Ending June 30, 1958	55
Table D-2, Disposition of Criminal Cases, County Courts—Year Ending June 30, 1958	58
Table E-1, Disposition of Civil Cases, City Courts—Year Ending June 30, 1958	61
Table E-2, Disposition of Criminal Cases, City Courts—Year Ending June 30, 1958	62
Please Help Us Keep Our Mailing List Up To Date	63
Members of Judicial Council	<i>(Inside back cover)</i>
Former Members of Judicial Council	<i>(Inside back cover)</i>

FOREWORD

Following our customary practice, we have asked the Honorable Jay W. Scovel, president of the Bar Association of the State of Kansas, whose photograph is shown on the cover, to prepare an article on a subject of his own choosing for publication in this issue of the BULLETIN. He has done so and we feel that his article will be of interest to our readers.

Mr. Scovel is a native Kansan and was graduated from the Montgomery County High School. He attended Baker and Kansas Universities for one year each, and was graduated from the University of Chicago Law School. He was admitted to practice in Kansas in 1921, and ever since has maintained his office and practiced at Independence. He now has associated with him his two sons, Thomas and Robert, both of whom are graduates of Kansas University School of Law. Mr. Scovel served in the U. S. Navy in World War I, and in the Judge Advocate General Corps of the Army in World War II. He retired from active duty in February, 1946, with the rank of lieutenant colonel. Throughout his professional career Mr. Scovel has been very active in civic and American Legion affairs, as well as those pertaining to bar association matters. For ten years he represented the third district on the executive council of the Bar Association of the State of Kansas, and in May of this year was elected to the office of president.

This issue of the BULLETIN also contains summarized tables showing the volume of work in the supreme court, the district courts, probate courts, county courts and city courts of the state for the year ending June 30, 1958. The Judicial Council requests your study of the statistical information shown in the tables and invites suggestions as to any improvements that could be made in the form and content of the information collected.

Kansas Needs Uniform Traffic Violation Penalties

By JAY W. SCOVEL, *President,*
The Bar Association of the State of Kansas

The Kansas Judicial Council has for many years been kind enough to invite the new president of the Bar Association to get something off his chest in the October issue of the BULLETIN. As has been done for many years, I have been given this opportunity to prepare an article for publication concerning two closely related subjects in which I am quite concerned.

One is the looseness of our driver's license requirements, and the other the uncertainty and lack of uniformity in punishments for offenses.

Concerning the driver's license, if you once have one and do not do something to get it revoked or allow it to lapse, you may continue to have a new license issued without any regard to your ability to drive. It has been my observation that there are many people who are most careful to make sure their license does not expire simply because they feel quite certain they could not pass a test to secure a license. That, in my opinion, is not good. It resolves itself to this: A person who was competent to drive 40 years ago and secured a license may continue to have his license renewed regardless of his present competency as a driver. Apparently the only way he can lose it is to be involved in some type of traffic violation that requires it. Quite often at that point someone loses their life or is seriously injured.

I distinctly recall one instance that came under my observation here in Independence. An old gentleman drove up to a parking meter and his hands were so shaky and unsteady he could not put money in the parking meter. Some pedestrian did it for him. In the next day's paper I saw where he had run into somebody and had been given a ticket for careless driving. Fortunately in this accident no one was seriously injured. That, however, is to be credited on the side of luck and not our driver's license laws.

I know it has been stated and is probably true that to require people to take periodic driver's tests would require a great amount of money and more personnel for the Highway Patrol. I feel quite sure that the expenditure of this additional money and securing additional personnel would in the over-all be a substantial saving in life and damaged property and worth all that it would cost.

The other thing that is on my mind which also affects traffic and traffic violations is the lack of uniformity and the uncertainty involved as to the penalty to be imposed for traffic violations. In many instances within the same county but in different jurisdictions there is a very marked difference in the punishment that is meted out for the same traffic offense. For instance, in this county if a party is picked up for drunken driving on the country road outside the city limits, a jail sentence is certain and possibly a fine and a portion of the jail sentence must be served. If, however, this occurs within the city limits a standard fine of \$100 and no jail sentence is imposed.

I was in a sheriff's office in an adjoining county a short time ago when an attorney and the sheriff were having an argument concerning a penalty that

had been imposed for running a stop sign. The driver had been taken in to the justice of the peace and, from their conversation, it appeared the total fine and cost had been \$5. The sheriff stated that if that was all that was to be involved in the small percentage of violators he could catch, he was not going to bother himself with trying to catch any more.

An incident has been called to my attention where a driver whose record disclosed a number of previous violations caused the death of four persons was given a 60-day sentence and a \$100 fine. He, however, was only required to pay the fine and served none of the jail sentence. There are, however, many cases involving no death or injury where jail sentences are imposed and served.

The penalties imposed for traffic violations are entirely out of line with the penalties imposed for other, that to me appear to be, minor offenses. I have done a little checking in this county and find that \$5 or \$10 seems to be standard for driving without a (the same price as swimming in a restricted area in the State Lake) license; whereas, fishing without a license runs from \$5 to \$25, both plus costs, and stealing a watermelon drew a 30-day jail sentence.

Now, under the law there is a maximum penalty that may be imposed for traffic violations, but there is no minimum. I am wondering if one should not be provided. At least something should be done if possible to secure more uniformity in punishment for the same offense.

There is a uniform traffic ticket and complaint prepared by the American Bar Association Traffic Court Program that has been adopted in some states, at least in Michigan, that I feel would be a very definite improvement. At least, it would provide a better check on a driver's past record. This comes in four parts with a carbon in between. The face of it gives a very detailed description of the vehicle, location, and the type of offense. The original is signed and sworn to by the arresting officer and filed with the court destined to handle the case. The back side of this is prepared for entering up an abstract of the court record for the vehicle commissioner, showing all steps taken and the final disposition of the charge. The third is prepared for making a report of the incident and the action taken to be sent to the sheriff's office, police department, or other law enforcement agency of the area where the violator lives. The fourth is the summons which is given to the traffic violator and on the back is quite complete information as to what he should do or can do. For any offense of a serious nature he must appear personally. For those of a less serious nature there is a place on the back where the offender may enter a plea of guilty which he may mail to the court in which he agrees to pay the penalty prescribed. It strikes me the adoption of this uniform traffic ticket might be a decided improvement.

At any rate, I feel we do need more strict laws concerning licenses to drive and some uniformity in the penalties imposed or the methods of handling traffic violations. I do feel that at least the penalty for driving without a license should be greater than for swimming in a restricted area or fishing without a license.

Summary of the Work of the Supreme Court

The following is a summary of the work of the Supreme Court for the year ended June 30, 1958, and the cases pending July 1, 1958.

There were 388 appealed civil cases disposed of within the year ended June 30, 1958. Of these 172 were dismissed without having been presented on the merits and 216 were submitted on the merits. Of these cases 142 were affirmed, 24 were reversed, 4 were affirmed in part and reversed in part, 2 were affirmed in part and modified in part, 15 were dismissed, 5 were reversed in part and remanded in part, 20 were reversed with directions, 2 were reversed in part and remanded with directions, 1 was affirmed in part and dismissed in part and reversed with directions, 1 was affirmed in part and dismissed in part.

The court disposed of 23 appealed criminal cases. Of this number 9 were dismissed without having been presented on the merits and 14 were submitted on the merits. Of these cases 10 were affirmed, 1 was reversed with instructions, 1 was reversed with directions, 1 was affirmed in part and reversed in part, 1 was reversed in part and remanded in part.

The court also disposed of 17 original cases. Of this number 4 were dismissed without having been presented on the merits and 13 cases were submitted on the merits and written opinions filed, resulting in judgment for the plaintiff in 4 cases, judgment for the defendant in 8 cases, and 1 case withdrawn.

This makes a total of 428 cases disposed of by the Supreme Court, of which 185 were dismissed without having been presented on the merits, and 243 decided on the merits.

The cases pending July 1, 1958, are as follows: 247 appealed civil cases; 22 appealed criminal cases; and 15 original cases, making a total of 284 cases pending.

Of the 243 cases submitted to the Supreme Court on the merits, in 40 cases the opinions were filed before the regular opinion day, in 183 cases on the first regular opinion day, in 9 cases on the second regular opinion day, in 3 cases on the third regular opinion day, in 1 case on the fourth regular opinion day, in 1 case on the fifth regular opinion day, in 2 cases on the seventh regular opinion day, in 2 cases on the eighth regular opinion day, and in 2 cases on the tenth regular opinion day.

The regular opinion day is ordinarily a month after the case is submitted, more accurately it is the Saturday of the week hearings are had the next month after the case is submitted.

In 216 appealed civil cases in which opinions were filed within the year ending June 30, 1958, the time between the date notice of appeal was filed in this court and the date the case was submitted on its merits was as follows: within 3 months 1 case; in 3 to 4 months 2 cases; in 4 to 5 months 2 cases; in 5 to 6 months 16 cases; in 6 to 7 months 15 cases; in 7 to 8 months 33 cases; in 8 to 9 months 43 cases; in 9 to 12 months 86 cases; and over 12 months 18 cases.

In the 14 appealed criminal cases in which opinions were filed within the year ended June 30, 1958, the time between the date notice of appeal was filed in this court and the date the case was submitted on its merits was as

follows: within 3 months 0 cases; in 3 to 4 months 0 cases; in 4 to 5 months 0 cases; in 5 to 6 months 1 case; in 6 to 7 months 1 case; in 7 to 8 months 4 cases; in 8 to 9 months 2 cases; in 9 to 12 months 4 cases; and over 12 months 2 cases.

There were pending in the Supreme Court July 1, 1958, a total of 284 cases as compared to 312 cases on the same date in 1957, 272 cases on the same date in 1956, 245 cases on the same date in 1955, 197 cases on the same date in 1954, 192 cases on the same date in 1953, 223 cases on the same date in 1952, 99 cases on the same date in 1951, 189 cases on the same date in 1950, 166 cases in 1949, 109 cases in 1943, 175 cases in 1942, 144 cases in 1941, 192 cases in 1940, 249 cases in 1939, 244 cases in 1938, 210 cases in 1937, 268 cases in 1936, 291 cases in 1935, 366 cases in 1934, 333 cases in 1933, 357 cases in 1932, 393 cases in 1931, 397 cases in 1930, 376 cases in 1929, and 341 cases in 1928.

In the 31 years the clerk of the Supreme Court has furnished us detailed information of the work of the court, it has disposed of 13,298 cases, of which 4,289 were dismissed before submission, and 9,009 were submitted on the merits and written opinions filed.

Supreme Court—Thirty-one-year Summary

YEAR ENDED JUNE 30	Cases	Disposed of	Dismissed	Submitted
1928	Appealed, civil	529	143	386
	Appealed, criminal	101	44	57
	Original	46	13	33
	Totals	676	200	476
1929	Appealed, civil	475	128	347
	Appealed, criminal	72	29	43
	Original	36	18	18
	Totals	583	175	408
1930	Appealed, civil	504	143	351
	Appealed, criminal	77	37	40
	Original	52	16	36
	Totals	633	196	437
1931	Appealed, civil	490	131	359
	Appealed, criminal	63	29	34
	Original	38	13	25
	Totals	591	173	418
1932	Appealed, civil	522	159	363
	Appealed, criminal	74	45	29
	Original	32	6	26
	Totals	628	210	418
1933	Appealed, civil	459	135	324
	Appealed, criminal	66	35	31
	Original	23	5	18
	Totals	548	175	373
1934	Appealed, civil	427	149	278
	Appealed, criminal	52	30	22
	Original	42	11	31
	Totals	521	190	331
1935	Appealed, civil	506	167	339
	Appealed, criminal	58	26	32
	Original	25	11	14
	Totals	589	204	385
1936	Appealed, civil	475	156	319
	Appealed, criminal	66	31	35
	Original	39	19	20
	Totals	580	206	374
1937	Appealed, civil	397	103	294
	Appealed, criminal	56	27	29
	Original	33	9	24
	Totals	486	139	347
1938	Appealed, civil	388	131	257
	Appealed, criminal	41	25	16
	Original	32	6	26
	Totals	461	162	299
1939	Appealed, civil	397	114	283
	Appealed, criminal	32	17	15
	Original	15	4	11
	Totals	444	135	309

SUPREME COURT SUMMARY—CONTINUED

YEAR ENDED JUNE 30	Cases	Disposed of	Dismissed	Submitted
1940.....	Appealed, civil.....	426	117	309
	Appealed, criminal.....	31	10	21
	Original.....	39	20	19
	Totals.....	496	147	349
1941.....	Appealed, civil.....	314	103	211
	Appealed, criminal.....	31	14	17
	Original.....	64	39	25
	Totals.....	409	156	253
1942.....	Appealed, civil.....	293	82	211
	Appealed, criminal.....	23	4	19
	Original.....	27	6	21
	Totals.....	343	92	251
1943.....	Appealed, civil.....	290	72	218
	Appealed, criminal.....	28	14	14
	Original.....	35	17	18
	Totals.....	353	103	250
1944.....	Appealed, civil.....	216	59	157
	Appealed, criminal.....	17	7	10
	Original.....	16	5	11
	Totals.....	249	71	178
1945.....	Appealed, civil.....	186	51	135
	Appealed, criminal.....	9	8	1
	Original.....	15	6	9
	Totals.....	210	65	145
1946.....	Appealed, civil.....	178	44	134
	Appealed, criminal.....	19	6	13
	Original.....	43	15	28
	Totals.....	240	65	175
1947.....	Appealed, civil.....	189	55	134
	Appealed, criminal.....	13	4	9
	Original.....	59	19	40
	Totals.....	261	78	183
1948.....	Appealed, civil.....	244	63	181
	Appealed, criminal.....	23	8	15
	Original.....	93	73	20
	Totals.....	360	144	216
1949.....	Appealed, civil.....	284	54	230
	Appealed, criminal.....	22	8	14
	Original.....	96	31	65
	Totals.....	402	93	309
1950.....	Appealed, civil.....	304	91	213
	Appealed, criminal.....	17	4	13
	Original.....	19	8	11
	Totals.....	340	103	237
1951.....	Appealed, civil.....	327	83	244
	Appealed, criminal.....	22	8	14
	Original.....	26	18	8
	Totals.....	375	109	266

SUPREME COURT SUMMARY—CONCLUDED

YEAR ENDED JUNE 30	Cases	Disposed of	Dismissed	Submitted
1952.....	Appealed, civil.....	244	57	187
	Appealed, criminal.....	42	17	25
	Original.....	10	3	7
	Totals.....	296	77	219
1953.....	Appealed, civil.....	291	96	195
	Appealed, criminal.....	43	13	30
	Original.....	33	11	22
	Totals.....	367	120	247
1954.....	Appealed, civil.....	280	91	189
	Appealed, criminal.....	48	26	22
	Original.....	32	12	20
	Totals.....	360	129	231
1955.....	Appealed, civil.....	306	114	192
	Appealed, criminal.....	19	6	13
	Original.....	20	5	15
	Totals.....	345	125	220
1956.....	Appealed, civil.....	318	120	198
	Appealed, criminal.....	31	8	23
	Original.....	29	8	21
	Totals.....	378	136	242
1957.....	Appealed, civil.....	295	112	183
	Appealed, criminal.....	24	7	17
	Original.....	27	7	20
	Totals.....	346	126	220
1958.....	Appealed, civil.....	388	172	216
	Appealed, criminal.....	23	9	14
	Original.....	17	4	13
	Totals.....	428	185	243
	Grand totals.....	13,298	4,289	9,009

TABLE A-1.—ROSTER OF JUDICIAL OFFICIALS AS OF JULY 1, 1958

COUNTY	Jud. dist.	District Judge	Clerk of court	Probate Judge
Allen.....	37	Spencer A. Gard.....	Mrs. Ina F. West.....	Howard T. Upshaw*
Anderson.....	4	Floyd H. Coffman.....	Mrs. Nell R. Graves.....	Deane L. Smith*
Atchison.....	2	Edmund L. Page.....	Hal Waisner.....	Frank Hunn
Barber.....	24	Clark A. Wallace.....	Mrs. Edith Myers.....	H. Lynn Randels*
Barton.....	20	Roy J. McMullen.....	Geneva Steincamp.....	Robert L. Bates*
Bourbon.....	6	Harry W. Fisher.....	Amy Armstrong.....	Francis H. Thomas
Brown.....	22	Chester C. Ingels.....	Mrs. Edna Boicourt.....	W. B. Congdon*
Butler..... Div. 1	13	George S. Reynolds.....	Mrs. Leah E. Walsh.....	Roy B. Darlington*
Div. 2		W. N. Calkins		
Chase.....	5	Jay Sullivan.....	Mrs. Mildred Speer.....	Mrs. Marie Bray
Chautauqua Div. 1	13	George S. Reynolds.....	Cleopha Call.....	Mrs. Myra A. Cheney
Div. 2		W. N. Calkins		
Cherokee.....	11	Jerome Harman.....	Nina Coldiron.....	Millard P. Knock
Cheyenne.....	17	Robert W. Hemphill.....	Mrs. Lois Slyhoff.....	J. L. Finley*
Clark.....	31	Ernest M. Vieux.....	Mrs. Hope Grimes.....	George M. Pike*
Clay.....	21	Lewis L. McLaughlin.....	Mrs. Hazel K. Chestnut	Walter O. Curtis*
Cloud.....	12	Marvin O. Brummett.....	Mrs. Minnie L. Johnson	Finley Daugherty*
Coffey.....	5	Jay Sullivan.....	Mrs. Mary Henning.....	Orville E. Steele*
Comanche.....	31	Ernest M. Vieux.....	Mary Guyer.....	Ralph R. Klepinger*
Cowley.....	19	Doyle E. White.....	Mrs. Sallie K. Smith.....	E. T. Bloomer
Crawford.....	38	L. M. Resler.....	Josephine Cattaneo.....	Richard Loffswold
Decatur.....	17	Robert W. Hemphill.....	Mrs. Alice J. Vernon.....	George Nellans*
Dickinson.....	8	Walter E. Hembrow.....	Seth Barter, Jr.....	John P. Dieter*
Doniphan.....	22	Chester C. Ingels.....	Virgil W. Begesse.....	William H. Strahan*
Douglas.....	41	Frank R. Gray.....	Mrs. Lucille Allison.....	Charles C. Rankin*
Edwards.....	33	Lorin T. Peters.....	Cecil Matthews.....	L. L. Anderson*
Elk..... Div. 1	13	George S. Reynolds.....	Mrs. Floy B. Magers.....	Miriam O. Beaty
Div. 2		W. N. Calkins		
Ellis.....	23	Benedict P. Cruise.....	Edward Bieker.....	Robert F. Glassman*
Ellsworth.....	30	John I. Young.....	F. A. Vanek.....	Gerhard Haase*
Finney.....	32	Roland H. Tate.....	G. Mae Purdy.....	M. C. Schrader*
Ford.....	31	Ernest M. Vieux.....	Elta J. Riley.....	Camilla Haviland*
Franklin.....	4	Floyd H. Coffman.....	Christina Woke.....	Winton A. Winter*
Geary.....	8	Walter E. Hembrow.....	Edward C. Verbeke.....	G. W. Schmidt*
Gove.....	23	Benedict P. Cruise.....	Mrs. Louise Brown.....	Yaro J. Smith*
Graham.....	34	C. E. Birney.....	Mrs. Louise Lee.....	Henry C. Albertson*
Grant.....	39	L. L. Morgan.....	Mrs. Juanita Barber.....	Veris J. Kinsman
Gray.....	31	Ernest M. Vieux.....	Carrie Borland.....	Grace H. Truax
Greene.....	32	Roland H. Tate.....	Laura M. Holmes.....	Hope Owen
Greenwood.. Div. 1	13	George S. Reynolds.....	Mrs. Alma Long.....	B. M. Beyer*
Div. 2		W. N. Calkins		
Hamilton.....	32	Roland H. Tate.....	Amelia J. Minor.....	Mrs. Ruth Bostwick
Harper.....	24	Clark A. Wallace.....	Mrs. Helen Pearl.....	Myrtle Youngberg*
Harvey.....	9	George L. Allison.....	Mrs. Mabel A. McMullen.....	Sam H. Sturm*
Haskell.....	39	L. L. Morgan.....	Mrs. Evelyn Yount.....	E. D. Bolinger
Hodgeman.....	33	Lorin T. Peters.....	Mrs. Nyna Lupfer.....	Thomas A. Dunn*
Jackson.....	36	Robert H. Kaul.....	Mrs. Florence Clements	I. Winters Funck*
Jefferson.....	36	Robert H. Kaul.....	Mrs. Myrtle Kimmel.....	Walter E. Ferris
Jewell.....	15	Donald J. McGaw.....	Mrs. Iris Cosand.....	Byron Rogers*
Johnson... Div. 1	10	Earl E. O'Connor.....	Mrs. Betty West.....	Joseph S. Davis, Jr.
Div. 2		Clayton Brenner		
Div. 3		Raymond H. Carr		
Kearny.....	32	Roland H. Tate.....	Mrs. Bertha Adams.....	Della Barchet*
Kingman.....	24	Clark A. Wallace.....	Gladys Layman.....	Fred Hurd*
Kiowa.....	31	Ernest M. Vieux.....	Mrs. Eunice E. Rich.....	Harry Paxton*
Labette.....	16	Hal Hyler.....	H. Lawrence Lane.....	Dan Aul
Lane.....	32	Roland H. Tate.....	Mrs. Eva Cramer.....	Guy H. Patton*
Leavenworth.....	1	Joseph J. Dawes.....	Mary Kate Gausz.....	Kenneth Harmon
Lincoln.....	30	John I. Young.....	Roy Livingood.....	H. H. Rector*
Linn.....	6	Harry W. Fisher.....	Mrs. Ferne Bearyl.....	Deward Austin
Logan.....	23	Benedict P. Cruise.....	Mrs. Ada F. Rogge.....	Nell C. Potter

TABLE A-1.—CONCLUDED. Roster of judicial officials as of July 1, 1958

COUNTY	Jud. dist.	District Judge	Clerk of court	Probate Judge
Lyon.....	5	Jay Sullivan.....	Cleadora Held.....	Wade Myers*
Marion.....	8	Walter E. Hembrow.....	C. J. Ross.....	Edward W. Colburn*
Marshall.....	21	Lewis L. McLaughlin.....	Wallace J. Koppes.....	P. R. Pulliene*
McPherson.....	9	George L. Allison.....	Donald S. Clark.....	Eugene D. Christensen
Meade.....	31	Ernest M. Vieux.....	Edyth Cooper.....	Julia Craig*
Miami.....	6	Harry W. Fisher.....	Mrs. Ethel J. Hunt.....	Fred Coon*
Mitchell.....	15	Donald J. McGaw.....	Ida B. Jamison.....	Richard W. Young*
Montgomery.....	14	Warren B. Grant.....	M. D. Smith.....	David Scott
Morris.....	8	Walter E. Hembrow.....	Mrs. Virginia Scholes.....	A. R. Carpenter*
Morton.....	39	L. L. Morgan.....	Mrs. Irene Kuder.....	Eula B. Sweem
Nemaha.....	22	Chester C. Ingels.....	Mrs. Ruth Shaffer.....	Robert C. Randel
Neosho.....	7	B. M. Dunham.....	Merle Estes.....	John G. Hemphill
Ness.....	33	Lorin T. Peters.....	Mrs. Dorothy Sticklein	Clyde E. Burns*
Norton.....	17	Robert W. Hemphill.....	Elsie Brault.....	J. W. Kissell*
Osage.....	35	A. K. Stavely.....	Mrs. Lucille Nelson.....	Frank Garrett*
Osborne.....	15	Donald J. McGaw.....	Elma McColl.....	Ethel McCammon*
Ottawa.....	30	John I. Young.....	Mrs. Esther Plunkett.....	W. D. Lancaster
Pawnee.....	33	Lorin T. Peters.....	Mrs. Eulah Almqvist.....	Spencer Ackerman*
Phillips.....	17	Robert W. Hemphill.....	Gene Britt.....	Ira S. McAlister*
Pottawatomie.....	36	Robert H. Kaul.....	Deane L. Arnold.....	Richard Edwards*
Pratt.....	24	Clark A. Wallace.....	Mrs. Mabel Axline.....	Gladys Scott*
Rawlins.....	17	Robert W. Hemphill.....	Mrs. Louise Portschy.....	Herbert Howland*
Reno.....	40	John Fontron.....	Glenn R. Williams.....	E. Victor Wilson
Republic.....	12	Marvin O. Brummett.....	Earl Baldrige.....	Warren A. Scott*
Rice.....	20	Roy J. McMullen.....	Laura Saint.....	John W. Warren*
Riley.....	21	Lewis L. McLaughlin.....	Joseph F. Musil.....	Scott Pfuetze*
Rooks.....	34	C. E. Birney.....	Irma Renner.....	James H. Gilbert*
Rush.....	33	Lorin T. Peters.....	Esta Manahan.....	O. F. Showalter*
Russell.....	23	Benedict P. Cruise.....	Mrs. Mary Humes.....	J. D. Steinkle*
Saline.....	30	John I. Young.....	Mrs. Betty J. Just.....	J. Herb Wilson
Scott.....	32	Roland H. Tate.....	Nellie Scheuerman.....	Ralph Hollingsworth*
Sedgwick.....	18	William C. Kandt.....	L. D. Leland.....	James V. Riddell, Jr.
		Howard C. Kline		
		B. Mack Bryant		
		Clement F. Clark		
		Henry Martz		
		Elmer E. Sattgast		
Seward.....	39	L. L. Morgan.....	Mrs. Mary Lindley.....	E. S. Irwin*
Shawnee.....	3	Beryl R. Johnson.....	Mrs. Lucile Carter.....	E. Newton Vickers
		Paul H. Heinz		
		Dean McElhenney		
Sheridan.....	34	C. E. Birney.....	Mrs. Minnie Carder.....	Wallace W. Cooper*
Sherman.....	34	C. E. Birney.....	Viva Peter.....	Letha L. Fogo*
Smith.....	15	Donald J. McGaw.....	Lucille Figg.....	Merrill H. Lyon*
Stafford.....	20	Roy J. McMullen.....	Arlene McCandless.....	Luther L. Carleton*
Stanton.....	39	L. L. Morgan.....	Mrs. Hazel Polly.....	Maurice L. Gillium
Stevens.....	39	L. L. Morgan.....	John F. Fulkerson.....	Frank M. Crawford*
Sumner.....	25	Wendell Ready.....	Laura McCormick.....	Charles E. Watson
Thomas.....	34	C. E. Birney.....	Thelma Livingston.....	F. E. Grover*
Trego.....	23	Benedict P. Cruise.....	Nina I. Galloway.....	Lucille Wanker*
Wabaunsee.....	35	A. K. Stavely.....	Dorothy M. Walker.....	William R. Ekart*
Wallace.....	23	Benedict P. Cruise.....	Evelyn P. Warren.....	F. H. Dobbis*
Washington.....	12	Marvin O. Brummett.....	Paul Froehlich.....	G. I. Thompson*
Wichita.....	32	Roland H. Tate.....	Kate Elder.....	Bess Eva Glenn
Wilson.....	7	B. M. Dunham.....	Dwaine Spoon.....	Bess Schmidt
Woodson.....	37	Spencer A. Gard.....	Zelma Stockebrand.....	C. G. Plumb*
Wyandotte.....	29	O. Q. Clafin, III.....	Richard D. Shannon.....	Joe H. Swinehart
		Willard M. Benton		
		Harry G. Miller, Jr.		
		William H. McHale		

* Also judge of county court.

TABLE A-2.—SUMMARY OF DISTRICT COURTS, BY DISTRICTS
YEAR ENDING JUNE 30, 1958

Judicial dist.	COUNTY	Civil cases, including divorce						Criminal cases					
		Pend- ing July 1, 1957	Com- menced	Termi- nated July 1, 1958	Pend- ing less than 6 months	Number pend- ing less than 6 months	Percent pend- ing less than 6 months	Pend- ing July 1, 1957	Com- menced	Termi- nated July 1, 1958	Pend- ing July 1, 1958	Number pend- ing less than 6 months	Percent pend- ing less than 6 months
1	Leavenworth.....	476	507	454	529	142	27	38	58	64	32	15	47
2	Atchison.....	147	168	157	158	46	29	14	46	49	11	5	45
3	Shawnee.....	616	1,740	1,685	671	496	74	161	429	432	158	113	72
4	Anderson.....	15	48	37	26	16	62	0	11	10	1	1	100
	Franklin.....	97	146	183	60	33	55	12	46	47	11	10	91
	Totals.....	112	194	220	86	49	57	12	57	57	12	11	92
5	Chase.....	9	29	27	11	8	73	1	4	4	1	1	100
	Coffey.....	28	62	75	15	15	100	0	8	7	1	1	100
	Lyon.....	110	173	194	89	47	53	5	32	36	1	0	0
	Totals.....	147	264	296	115	70	61	6	44	47	3	2	67
6	Bourbon.....	61	143	150	54	29	54	26	39	46	19	8	42
	Linn.....	18	74	57	35	23	67	0	5	3	2	1	50
	Miami.....	67	155	155	67	29	43	6	20	21	5	2	40
	Totals.....	146	372	362	156	81	52	32	64	70	26	11	42
7	Neosho.....	57	138	125	70	41	59	7	21	20	8	8	100
	Wilson.....	43	128	114	57	30	53	6	16	17	5	3	60
	Totals.....	100	266	239	127	71	56	13	37	37	13	11	85
8	Dickinson.....	57	140	124	73	36	49	17	17	30	4	1	25
	Geary.....	108	250	245	122	67	67	13	60	48	25	18	72
	Marion.....	25	72	63	34	28	82	2	14	10	6	4	67
	Morris.....	35	54	64	25	14	58	0	14	14	0	0	0
	Totals.....	225	525	496	254	160	63	32	105	102	35	23	66

TABLE A-2.—CONTINUED. Summary of District Courts, by Districts—Year Ending June 30, 1958

Judicial dist.	COUNTY	Civil cases, including divorce						Criminal cases					
		Pending July 1, 1957	Com-menced	Termi-nated	Pend-ing July 1, 1958	Number pending less than 6 months	Percent pending less than 6 months	Pend-ing July 1, 1957	Com-menced	Termi-nated	Pend-ing July 1, 1958	Number pending less than 6 months	Percent pending less than 6 months
9	Harvey.....	79	284	199	114	63	55	16	48	48	16	10	63
	McPherson.....	38	120	111	47	32	68	10	25	5	5	4	80
	Totals.....	117	354	310	161	95	59	26	73	21	21	14	67
10	Johnson.....	618	1,017	864	771	281	36	38	89	59	59	18	31
	Cherokee.....	163	175	178	160	56	35	6	23	16	16	7	44
12	Cloud.....	9	53	43	19	17	89	0	4	4	0	0	0
	Republic.....	53	78	47	84	32	38	8	9	12	5	3	60
	Washington.....	20	36	41	15	10	67	0	5	5	0	0	0
	Totals.....	82	167	131	118	59	50	8	18	21	5	3	60
13	Butler.....	301	320	299	322	113	35	99	197	180	116	67	58
	Chautauqua.....	42	51	63	31	15	48	0	3	4	1	1	100
	Elk.....	20	68	60	23	18	72	1	6	6	1	1	100
	Greenwood.....	39	173	160	52	41	79	4	13	14	3	3	100
	Totals.....	402	610	582	430	187	43	104	204	204	121	72	60
14	Montgomery.....	206	413	398	221	112	51	20	142	122	40	29	73
	Jewell.....	19	35	41	13	9	69	4	3	5	2	1	50
15	Mitchell.....	15	34	26	23	10	43	1	13	11	3	3	100
	Osborne.....	18	63	66	15	7	47	0	3	0	3	3	100
	Smith.....	27	39	39	27	5	19	0	1	1	0	0	0
	Totals.....	79	171	172	78	31	40	5	20	17	8	7	88
16	Labette.....	85	201	186	100	55	55	12	24	27	9	2	22
	Cheyenne.....	3	24	20	7	5	71	0	2	2	0	0	0
17	Decatur.....	11	27	29	9	5	56	4	1	4	1	1	100
	Norton.....	29	36	47	18	6	33	0	6	6	0	0	0
	Phillips.....	14	47	40	21	14	67	0	2	2	0	0	0
	Rawlins.....	13	18	24	7	3	43	6	5	9	2	0	0
	Totals.....	70	152	160	62	33	53	10	16	23	3	1	33

TABLE A-2.—CONTINUED. Summary of District Courts, by Districts—Year Ending June 30, 1958

Judicial dist.	COUNTY	Civil cases, including divorce						Criminal cases					
		Pending July 1, 1957	Com-menced	Ter-mi-nated	Pend-ing July 1, 1958	Number pending less than 6 months	Percent pending less than 6 months	Pending July 1, 1957	Com-menced	Ter-mi-nated	Pend-ing July 1, 1958	Number pending less than 6 months	Percent pending less than 6 months
18	Sedgwick.....	3,587	4,657	4,104	4,140	1,491	36	328	1,044	409	305	75	
19	Cowley.....	162	288	318	132	80	61	17	69	73	7	54	
20	Barton.....	162	284	268	178	88	49	20	44	50	10	71	
	Rice.....	23	59	53	29	15	52	2	13	10	4	80	
	Stafford.....	18	65	52	31	17	54	4	19	18	3	60	
	Totals.....	203	408	373	238	120	50	26	76	78	17	71	
21	Clay.....	37	38	57	18	5	28	1	7	7	1	100	
	Marshall.....	35	90	79	46	34	74	2	6	6	2	100	
	Riley.....	115	206	178	143	75	52	13	40	50	3	100	
	Totals.....	187	334	314	207	114	55	16	53	63	6	100	
22	Brown.....	30	78	78	30	22	73	2	17	17	2	100	
	Doniphan.....	33	50	64	19	21	90	2	5	6	1	17	
	Nemaha.....	9	58	38	29	26	90	3	6	7	0	0	
	Totals.....	72	186	180	78	69	88	7	28	30	3	30	
23	Ellis.....	53	89	89	53	26	49	3	18	18	2	67	
	Gove.....	5	21	17	9	8	89	1	2	7	0	0	
	Logan.....	15	25	34	6	4	67	0	8	7	1	100	
	Russell.....	83	73	100	56	18	32	6	7	7	0	0	
	Trego.....	10	41	25	26	25	96	1	7	8	0	0	
	Wallace.....	5	23	22	6	4	67	0	2	2	0	0	
	Totals.....	171	272	287	156	85	53	11	40	45	3	50	
24	Barber.....	16	43	41	18	16	89	0	12	11	1	100	
	Harper.....	21	52	63	10	6	60	6	23	3	1	33	
	Kingman.....	9	42	37	14	12	86	0	13	20	2	67	
	Pratt.....	45	90	94	41	22	54	2	22	21	2	67	
	Totals.....	91	227	235	83	56	67	8	70	68	6	60	

TABLE A-2.—CONTINUED. Summary of District Courts, by Districts—Year Ending June 30, 1958

Judicial dist.	County	Civil cases, including divorce						Criminal cases					
		Pending July 1, 1957	Com-menced	Ter-mi-nated	Pend-ing July 1, 1958	Number pending less than 6 months	Percent pending less than 6 months	Pending July 1, 1957	Com-menced	Ter-mi-nated	Pend-ing July 1, 1958	Number pending less than 6 months	Percent pending less than 6 months
25	Summer.....	56	193	165	84	60	71	8	32	33	7	3	43
29	Wyandotte.....	3,992	2,710	3,635	3,067	942	31	203	381	338	246	127	52
30	Ellsworth.....	17	35	36	16	14	88	6	2	8	0	0	0
	Lincoln.....	3	34	12	25	20	80	0	7	5	2	1	50
	Ottawa.....	21	19	30	10	4	40	0	3	1	2	0	0
	Saline.....	430	443	403	470	170	36	30	92	94	28	23	82
	Totals.....	471	531	481	521	208	40	36	104	108	32	24	75
31	Clark.....	12	24	23	13	6	46	0	2	2	0	0	0
	Comanche.....	9	14	18	5	2	40	2	1	2	1	0	0
	Ford.....	76	128	133	71	45	63	9	37	34	12	11	92
	Gray.....	0	22	13	9	8	89	0	5	5	0	0	0
	Kiowa.....	9	20	18	11	8	73	0	10	10	0	0	0
	Meade.....	28	45	53	20	7	35	0	2	2	0	0	0
	Totals.....	134	253	258	129	76	58	11	57	55	13	11	85
32	Finney.....	80	110	100	90	42	47	22	74	85	11	7	70
	Greeley.....	16	10	15	11	2	18	1	2	3	0	0	0
	Hamilton.....	20	20	30	10	1	10	1	4	4	0	0	0
	Kearny.....	30	33	15	33	1	21	3	6	5	5	4	80
	Lane.....	11	13	17	7	2	29	2	0	2	0	0	0
	Scott.....	20	23	26	17	8	47	0	12	10	2	2	100
	Wichita.....	11	36	27	20	9	45	0	3	3	0	0	0
	Totals.....	188	230	230	188	71	38	29	101	112	18	13	72
33	Edwards.....	15	18	26	7	3	43	0	11	10	1	1	100
	Hodgeman.....	8	12	13	7	4	57	2	8	8	2	2	100
	Ness.....	20	26	31	15	9	60	0	0	0	0	0	0
	Pawnee.....	28	51	27	17	17	63	6	28	26	8	7	88
	Rush.....	33	28	41	20	10	50	0	5	2	3	0	0
	Totals.....	104	135	163	76	43	57	10	52	48	14	10	71

TABLE A-2.—CONCLUDED. Summary of District Courts, by Districts—Year Ending June 30, 1958

Judicial dist.	County	Civil cases, including divorce						Criminal cases					
		Pend- ing July 1, 1957	Com- menced	Termi- nated July 1, 1958	Pend- ing July 1, 1958	Number pending less than 6 months	Percent pending less than 6 months	Pend- ing July 1, 1957	Com- menced	Termi- nated July 1, 1958	Pend- ing July 1, 1958	Number pending less than 6 months	Percent pending less than 6 months
34	Graham.....	19	56	47	28	16	57	15	18	2	2	100	
	Rooks.....	27	77	69	35	24	69	8	6	6	4	4	
	Sheridan.....	10	24	20	14	9	64	1	1	0	0	0	
	Sherman.....	43	48	69	22	14	64	13	8	7	0	0	
	Thomas.....	13	63	51	25	14	56	9	7	4	2	50	
Totals.....	112	268	256	124	77	62	14	46	41	19	8	42	
35	Osage.....	29	90	95	24	14	58	1	24	20	5	4	
	Wabausee.....	11	36	31	16	6	38	6	7	0	0	0	
	Totals.....	40	126	126	40	20	50	2	30	27	5	4	
36	Jackson.....	24	75	46	53	24	45	5	7	4	1	25	
	Jefferson.....	77	102	109	70	27	30	15	14	3	1	33	
	Pottawatomie.....	44	81	83	42	20	48	16	16	11	3	27	
	Totals.....	145	258	238	165	71	43	36	37	18	5	28	
	Allen.....	62	162	151	73	48	66	8	31	32	7	86	
37	Woodson.....	18	53	44	27	19	27	4	4	1	1	100	
	Totals.....	80	215	195	100	67	67	35	36	8	7	88	
	Crawford.....	401	276	326	351	96	27	65	37	65	31	48	
38	Grant.....	19	32	36	21	14	67	5	5	1	0	0	
	Haskell.....	4	17	15	6	4	67	4	3	1	0	0	
	Morton.....	16	46	50	12	10	83	9	8	3	1	33	
	Seward.....	52	142	115	79	56	71	47	38	12	8	67	
	Stanton.....	2	11	9	4	2	50	2	2	0	0	0	
	Stevens.....	13	89	85	17	10	59	5	5	1	0	0	
	Totals.....	106	343	310	139	96	69	7	72	61	18	9	50
40	Reno.....	374	622	590	406	180	44	171	164	61	43	70	
	Douglas.....	130	255	219	166	100	61	100	77	42	31	74	
41	Totals.....	14,597	20,083	19,893	14,787	6,146	42	4,235	4,032	1,611	1,017	63	
	Grand totals.....	14,597	20,083	19,893	14,787	6,146	42	4,235	4,032	1,611	1,017	63	

SUMMARY OF DISTRICT COURTS—BY COUNTIES
 TABLE A-3.—DISPOSITION OF CIVIL CASES, INCLUDING DIVORCE—YEAR ENDING JUNE 30, 1958

COUNTIES	Total number cases	Foreign transcript	Number dismissed	Number not contested	Contested trials				Appeals (Supreme court)	
					Number	To court	To jury	Time from petition to trial		
								Number less than 6 months		Percent less than 6 months
Allen*	151	2	57	52	34	5	22	56	0	
Anderson*	37	2	9	19	6	0	6	100	1	
Atchison	157	0	33	79	38	7	21	47	1	
Barber	41	3	17	3	18	0	17	94	1	
Barton	268	13	119	57	77	2	55	70	3	
Bourbon	150	1	44	66	37	2	30	77	0	
Brown	78	3	21	42	11	1	8	67	0	
Butler*	299	2	117	119	52	7	35	59	2	
Chase	27	3	8	11	5	0	4	80	0	
Chautauqua	63	2	23	29	8	1	5	56	0	
Cherokee	178	2	62	85	24	5	15	52	10	
Cheyenne	20	1	8	9	2	0	1	50	0	
Clark	23	0	12	9	2	0	2	100	2	
Clay	57	0	26	22	8	1	5	56	1	
Cloud	43	3	3	30	6	1	4	57	0	
Coffey	75	0	22	42	11	0	9	42	1	
Comanche*	18	0	1	8	7	0	4	57	1	
Cowley	318	21	124	89	83	1	61	73	0	
Crawford	326	0	150	95	75	6	47	58	0	
Decatur	29	0	6	20	2	1	0	0	0	
Dickinson	124	5	25	78	13	3	4	25	0	
Doniphan*	64	1	16	13	32	1	30	91	0	
Douglas*	219	0	78	83	49	7	35	63	3	
Edwards	26	1	8	6	11	0	6	0	1	
Elk	60	0	16	36	8	0	4	50	1	

TABLE A-3.—CONTINUED. Disposition of Civil Cases, Including Divorce—Year Ending June 30, 1958

COUNTIES	Total number cases	Foreign transcript	Number dismissed	Number not contested	Contested trials				Time from petition to trial		Appeals (Supreme court)
					Number	To court	To jury	Number less than 6 months	Percent less than 6 months		
Ellis.....	89	0	43	18	28	27	1	7	25	0	
Ellsworth.....	36	0	14	5	17	11	6	5	29	0	
Finney.....	100	1	35	46	18	13	5	9	50	1	
Ford.....	133	0	44	54	35	33	2	20	57	4	
Franklin.....	183	3	51	60	69	44	25	44	67	0	
Geary.....	245	2	92	132	19	19	0	11	58	1	
Gove.....	17	1	4	2	10	10	0	9	90	0	
Graham.....	47	1	11	29	6	6	0	4	67	2	
Grant.....	36	3	16	17	0	0	0	0	0	0	
Gray.....	13	2	3	8	0	0	0	0	0	0	
Greely.....	15	1	5	4	5	5	0	3	60	0	
Greenwood.....	160	4	30	102	24	23	1	17	71	3	
Hamilton.....	30	0	10	17	3	3	0	2	67	1	
Harper.....	63	1	20	15	27	27	0	25	93	0	
Harvey.....	199	10	58	70	61	57	4	47	77	7	
Haskell.....	15	0	8	3	4	3	1	0	0	2	
Hodgeman.....	13	0	5	6	2	2	0	2	100	0	
Jackson.....	46	0	8	25	13	13	0	3	23	0	
Jefferson.....	109	6	29	54	20	11	9	10	50	1	
Jewell.....	41	1	11	22	7	3	4	1	14	1	
Johnson.....	864	98	265	268	233	193	40	168	72	11	
Kearny.....	15	1	2	4	8	7	0	7	89	1	
Kingman.....	37	0	5	27	5	5	0	5	100	0	
Kiowa.....	18	2	6	7	3	3	0	3	100	0	
Labette*.....	186	2	72	79	32	28	4	23	72	2	
Lane.....	17	0	4	12	1	1	0	1	100	0	
Leavenworth.....	454	20	128	113	193	193	0	170	88	11	
Lincoln.....	12	0	6	3	2	1	2	1	33	1	
Linn.....	57	3	17	35	3	2	0	1	50	0	
Logan.....	34	2	5	22	5	5	0	1	20	0	

TABLE A-3.—CONTINUED. Disposition of Civil Cases, Including Divorce—Year Ending June 30, 1958

COUNTIES	Total number cases	Foreign transcript	Number dismissed	Number not contested	Contested trials				Appeals (Supreme court)	
					Number	To court	To jury	Time from petition to trial		
								Number less than 6 months		Percent less than 6 months
Lyon.....	194	4	54	84	52	44	8	30	58	7
Marion.....	63	0	11	40	12	12	0	6	50	3
Marshall.....	79	2	28	23	26	20	6	17	65	1
McPherson.....	111	4	28	26	46	45	1	31	46	2
Meade.....	53	0	13	17	23	21	2	21	91	2
Miami.....	155	8	49	77	21	19	2	17	81	2
Mitchell.....	26	2	11	4	8	8	0	7	88	0
Montgomery.....	398	20	100	115	148	138	10	91	61	4
Morris.....	64	3	13	30	20	19	1	8	40	0
Morton.....	50	3	17	14	16	16	0	8	50	1
Nemaha.....	38	4	15	15	4	4	0	2	50	0
Neosho.....	135	4	42	34	45	43	2	39	87	2
Ness.....	31	1	13	9	8	7	1	5	63	1
Norton.....	47	0	17	20	10	10	0	7	70	1
Osage.....	95	6	17	68	4	4	0	1	25	0
Osborne.....	66	6	15	35	10	10	0	6	60	1
Ottawa.....	20	2	13	11	4	4	0	4	100	0
Pawnee.....	32	4	17	15	16	13	3	5	31	1
Phillips.....	40	0	15	21	4	4	0	4	100	0
Pottawatomie.....	83	0	18	42	23	21	2	13	57	1
Pratt.....	94	5	39	36	14	12	2	8	57	2
Rawlins.....	24	0	7	1	16	16	0	12	75	0
Renov.....	507	59	231	246	53	45	8	42	79	0
Republic.....	47	5	16	18	8	8	0	1	13	29
Rice.....	53	5	11	29	8	7	1	6	75	1
Riley.....	178	9	60	56	53	44	9	39	74	4
Rooks.....	69	0	22	32	15	15	0	9	60	0
Rush.....	41	0	8	20	13	9	4	7	54	2
Russell.....	100	7	40	22	31	27	4	10	32	2
Saline*.....	403	0	172	131	99	94	5	56	57	1

TABLE A-3.—CONCLUDED. Disposition of Civil Cases, Including Divorce—Year Ending June 30, 1958

COUNTIES	Total number cases	Foreign transcript	Number dismissed	Number not contested	Contested trials				Appeals (Supreme court)	
					Number	To court	To jury	Time from petition to trial		
								Number less than 6 months		Percent less than 6 months
Scott	26	0	7	13	6	4	2	2	33	1
Sedgwick*	4,104	243	1,718	1,326	810	750	514	514	63	16
Seward	115	1	39	65	10	10	8	8	80	0
Shawnee*†	1,685	0	791	620	272	239	176	176	65	0
Sheridan	20	1	7	9	3	3	0	0	0	0
Sherman*	69	0	14	28	26	24	13	13	50	0
Smith	39	0	15	17	7	7	0	0	71	3
Stafford	52	5	12	18	17	17	9	9	52	0
Stanton	9	0	1	3	5	5	3	3	60	0
Stevens†	85	4	61	16	2	0	0	0	0	0
Sumner*	165	8	48	35	39	38	32	32	82	0
Thomas	51	3	11	29	2	1	1	1	50	0
Trego	25	0	6	14	5	5	3	3	60	1
Wabunsee	31	1	8	18	4	4	3	3	75	0
Wallace	22	3	7	10	2	1	1	1	50	1
Washington†	41	1	11	17	9	9	4	4	44	0
Wichita	27	0	12	12	4	4	3	3	75	0
Wilson	114	0	45	45	24	14	10	12	50	1
Woodson	44	2	19	5	18	18	0	15	83	0
Wyandotte**	3,635	124	2,109	784	605	583	22	220	36	6
Totals	19,893	793	8,071	6,786	4,203	3,852	351	2,565	61	180

* Additional cases which were removed to the Federal Court: Allen County, 1; Anderson County, 1; Butler County, 1; Comanche County, 2; Doniphan County, 1; Douglas County, 2; Labette County, 1; Saline County, 1; Sedgwick County, 7; Shawnee County, 1; Sherman County, 1; Sumner County, 1; Wyandotte County, 12.
 † Additional jury trials resulting in mistrials: Butler County, 1; Reno County, 1; Shawnee County, 1; Stevens County, 2; Washington County, 2; Wyandotte County, 1.

SUMMARY OF DISTRICT COURTS—BY COUNTIES
TABLE A-4.—DISPOSITION OF DIVORCE CASES—YEAR ENDING JUNE 30, 1958

COUNTIES	Total number cases	Number dismissed	Number con- tested	Number denied	Divorce granted		Disposition of minor children			Property settlement or permanent alimony awarded	Child support awarded	Emergency declared
					To wife	To husband	To wife	To husband	To other disposition			
Allen.....	60	24	20	0	23	13	19	4	1	25	16	0
Anderson.....	15	5	2	0	8	9	3	0	0	4	3	0
Archison.....	53	12	17	2	30	9	16	2	2	36	16	0
Barber.....	13	6	5	0	5	2	0	0	0	4	5	0
Barton.....	107	47	28	0	42	18	28	8	1	19	26	3
Bourbon.....	78	18	17	0	51	9	33	10	0	28	27	11
Brown.....	27	7	5	0	17	3	9	0	0	13	10	1
Butler.....	121	45	15	0	56	20	35	7	0	22	32	3
Chase.....	6	0	2	0	4	2	4	0	0	1	4	1
Chautauqua.....	18	5	3	0	10	3	5	0	0	7	5	1
Cherokee.....	80	27	9	0	40	13	24	2	0	33	24	3
Cheyenne.....	9	3	2	0	4	2	1	0	0	5	0	1
Clark.....	5	3	0	0	2	0	0	0	0	0	0	0
Clay.....	25	10	4	0	10	5	7	3	0	4	5	0
Cloud.....	18	2	0	0	13	3	8	0	0	5	8	2
Coffey.....	22	11	4	0	9	2	5	1	0	6	3	0
Comanche.....	6	0	3	0	3	3	4	1	0	2	3	0
Cowley.....	160	72	25	0	67	21	34	2	0	53	27	5
Crawford.....	151	72	16	1	62	16	35	0	0	29	34	9
Decatur.....	12	3	0	0	6	3	0	0	0	9	4	0
Dickinson.....	44	11	4	0	26	7	17	4	1	18	17	0
Doniphan.....	17	3	5	0	13	1	9	0	0	9	8	0
Douglas.....	94	29	23	3	45	17	29	2	0	19	26	0
Edwards.....	1	1	0	0	1	1	3	0	0	1	2	0
Elk.....	11	2	1	0	7	2	3	0	0	4	4	0
Ellis.....	16	6	5	1	9	0	6	0	0	3	6	0
Ellsworth.....	12	7	3	0	3	2	3	2	0	5	3	0
Finney.....	48	13	6	0	27	8	18	2	0	22	18	1
Ford.....	61	18	10	1	35	7	17	1	0	33	13	1
Franklin.....	43	6	16	0	27	10	17	7	0	20	16	0

TABLE A-4.—CONTINUED. Disposition of Divorce Cases—Year Ending June 30, 1958

COUNTRIES	Total number cases	Number dismissed	Number con- tested	Number denied	Divorce granted		Disposition of minor children			Property settlement or permanent alimony awarded	Child support awarded	Emergency declared
					To wife	To husband	To wife	To husband	To other disposition			
Geary.....	162	61	10	0	52	49	50	2	0	29	47	9
Gove.....	12	1	0	0	0	0	0	0	0	0	0	0
Graham.....	16	5	3	0	2	6	5	3	0	7	5	0
Grant.....	10	5	0	0	7	4	8	0	0	0	5	0
Gray.....	4	1	0	0	2	1	2	0	0	0	1	1
Greeley.....	4	1	2	0	2	1	1	1	0	1	1	0
Greenwood.....	35	5	9	0	20	10	16	1	0	9	7	4
Hamilton.....	14	5	2	0	8	1	3	0	0	2	2	1
Harper.....	24	6	6	0	7	8	6	0	0	6	6	0
Harvey.....	60	19	8	0	30	11	17	1	0	29	18	3
Haskell.....	1	0	1	0	0	1	0	0	0	0	0	0
Hodgeman.....	4	1	0	0	3	1	2	0	0	1	2	0
Jackson.....	14	0	4	0	10	4	7	0	0	1	6	0
Jefferson.....	21	6	3	0	13	3	7	0	0	7	5	0
Jewell.....	6	1	1	0	2	3	1	1	0	3	0	0
Johnson.....	315	98	143	4	178	35	111	5	1	169	111	1
Kearny.....	7	1	4	0	17	1	3	1	0	4	3	1
Kingman.....	21	1	1	0	17	3	14	2	0	15	3	1
Kowa.....	3	1	1	0	1	1	10	1	0	1	1	0
Labette.....	73	34	12	0	31	8	18	0	0	5	15	0
Lane.....	4	1	0	0	0	3	2	0	0	2	1	5
Leavenworth.....	174	73	20	0	79	22	43	16	2	48	54	0
Lincoln.....	2	2	0	0	0	0	5	1	0	0	0	3
Linn.....	15	8	1	0	5	2	1	0	0	2	5	0
Logan.....	1	0	0	0	1	0	1	0	0	0	0	0
Lyon.....	67	18	12	1	41	7	24	1	0	15	20	3
Marion.....	17	3	4	0	11	3	8	0	0	6	6	0
Marshall.....	10	5	2	0	8	6	5	1	0	4	4	0
McPherson.....	26	6	5	0	18	4	14	0	0	9	11	0
Meads.....	3	0	0	0	2	1	2	0	0	0	2	0

TABLE A-4.—CONTINUED. Disposition of Divorce Cases—Year Ending June 30, 1958

COUNTIES	Total number cases	Number dismissed	Number con-tested	Number denied	Divorce granted		Disposition of minor children			Property settlement or permanent alimony awarded	Child support awarded	Emergency declared
					To wife	To husband	To wife	To husband	To other disposition			
Miami.....	59	21	8	0	27	11	22	1	15	14	2	
Mitchell.....	5	3	0	0	2	0	2	0	0	1	0	
Montgomery.....	184	52	52	2	100	30	59	3	59	62	8	
Morris.....	22	4	7	0	17	1	6	0	11	6	1	
Morton.....	21	9	6	0	11	1	4	0	7	3	1	
Nemaha.....	7	2	2	0	4	1	5	0	3	4	0	
Neosho.....	56	13	16	1	26	16	15	3	22	14	0	
Ness.....	6	5	0	0	1	0	1	0	0	1	0	
Norton.....	25	8	4	0	14	3	12	0	16	9	0	
Osage.....	29	8	0	0	15	6	0	0	13	9	0	
Osborne.....	14	3	2	0	7	4	4	0	11	3	2	
Ottawa.....	13	6	3	0	5	2	1	0	1	0	0	
Pawnee.....	18	5	5	1	10	2	8	0	2	6	0	
Phillips.....	14	7	2	0	6	1	6	0	1	6	0	
Pottawatomie.....	22	5	5	0	9	8	8	0	10	6	0	
Pratt.....	38	14	1	0	20	4	10	1	9	7	0	
Rawlins.....	7	3	3	0	3	1	2	0	0	2	0	
Reno.....	292	125	30	2	123	42	72	1	27	61	12	
Republic.....	10	7	1	0	2	1	1	0	1	2	0	
Rice.....	17	2	7	0	13	2	9	2	12	10	0	
Riley.....	81	22	17	0	34	25	25	6	35	20	4	
Rooks.....	18	5	3	0	10	3	4	0	7	3	0	
Rush.....	5	4	0	0	1	0	0	0	1	1	0	
Russell.....	31	13	3	3	13	2	11	0	5	10	0	
Saline.....	187	60	27	1	93	33	62	7	37	51	4	
Scott.....	8	2	3	0	4	2	4	0	5	3	0	
Sedgewick.....	2,210	1,018	346	1	967	224	535	42	548	430	28	
Seward.....	67	19	7	0	38	10	22	1	12	19	1	
Shawnee.....	858	385	98	2	401	70	230	13	298	204	35	
Sheridan.....	5	2	0	0	3	0	3	0	0	1	0	

TABLE A-4.—CONCLUDED. Disposition of Divorce Cases—Year Ending June 30, 1958

COUNTIES	Total number cases	Number dismissed	Number con- tested	Number denied	Divorce granted		Disposition of minor children		Property settlement or permanent alimony awarded	Child support awarded	Emergency declared
					To wife	To husband	To wife	To husband			
Sherman.....	18	1	4	1	12	4	12	0	5	8	2
Smith.....	16	8	2	0	7	1	4	0	3	3	0
Stafford.....	16	3	1	0	6	3	4	0	6	3	3
Stanton.....	17	0	0	0	1	0	1	0	1	1	0
Stevens.....	10	3	0	0	4	3	4	0	0	3	2
Sumner.....	93	31	14	0	50	12	32	1	16	26	0
Thomas.....	20	0	5	0	10	5	8	1	7	8	0
Trego.....	2	0	3	2	3	0	3	0	2	3	1
Wabunsee.....	7	3	0	0	3	1	2	0	1	0	0
Wallace.....	4	1	0	1	0	2	0	0	1	0	0
Washington.....	4	0	2	0	3	1	2	0	1	1	0
Wichita.....	1	0	0	0	1	0	0	0	0	0	0
Wilson.....	46	23	20	0	18	5	12	1	5	11	2
Woodson.....	8	5	1	0	1	2	0	0	2	0	0
Wyandotte.....	1,742	1,098	195	1	510	133	306	26	373	259	37
Totals.....	8,780	3,848	1,407	31	3,823	1,078	2,313	215	2,407	2,000	221

SUMMARY OF DISTRICT COURTS—BY COUNTIES
TABLE A-5.—TYPES OF CIVIL CASES—YEAR ENDING JUNE 30, 1958

COUNTIES	Recovery of money	Damages	Foreclosure	Quiet title	Divorce	Replevin	Ejectment	Injunction	Partition	Tax cases	Habeas corpus	Probate appeals	Other appeals	Miscellaneous	*Total number of cases	Foreign transcript
Allen.....	42	12	2	8	59	3	2	1	8	0	0	0	7	16	160	2
Anderson.....	5	9	0	9	20	4	0	1	0	1	0	0	2	3	46	2
Atchison.....	23	41	4	41	51	1	0	4	4	0	0	0	3	10	168	0
Barber.....	4	6	0	6	17	1	0	1	3	1	2	0	0	2	40	3
Barton.....	60	32	1	11	112	4	0	1	3	0	0	9	6	32	271	13
Bourbon.....	16	14	7	17	63	1	0	0	4	1	0	0	8	11	142	1
Brown.....	12	12	2	13	29	0	0	1	3	0	0	0	0	3	75	3
Butler.....	89	5	0	25	137	11	0	1	15	1	2	6	4	21	317	3
Chase.....	5	1	0	3	8	1	0	0	5	0	0	0	2	1	26	3
Chautauqua.....	7	9	0	11	11	2	1	0	2	1	0	1	0	5	50	2
Cherokee.....	15	25	0	34	70	4	0	1	0	1	0	1	6	16	173	2
Cheyenne.....	2	4	0	1	13	0	0	0	1	0	0	0	0	2	23	1
Clark.....	6	3	0	0	5	0	0	0	1	0	0	1	0	8	24	0
Clay.....	4	2	0	6	21	0	0	0	0	0	0	2	2	1	38	0
Cloud.....	2	6	1	10	23	0	0	0	3	0	0	0	2	3	50	3
Coffey.....	9	1	0	18	17	2	0	0	1	1	0	1	10	2	62	0
Comanche.....	1	3	0	3	4	1	1	0	1	0	0	0	0	1	14	0
Cowley.....	25	29	4	25	138	2	0	2	9	2	1	1	10	18	267	21
Crawford.....	36	79	2	16	114	4	2	5	1	2	0	2	1	12	276	0
Decatur.....	6	1	0	5	11	0	0	0	3	0	0	0	0	1	27	0
Dickinson.....	12	8	5	30	44	0	1	1	4	1	0	0	19	10	135	5
Doniphan.....	11	4	0	15	11	3	0	3	0	0	0	0	2	11	49	1
Douglas.....	17	43	1	42	114	2	0	6	1	0	0	0	4	24	295	0
Edwards.....	5	0	0	2	5	1	0	0	0	0	0	0	0	0	17	1
Elk.....	39	1	0	7	12	0	0	0	2	0	0	1	1	2	65	0
Ellis.....	18	21	2	8	13	0	1	1	2	0	0	0	3	20	80	0
Ellsworth.....	15	4	0	4	10	0	0	0	0	0	0	0	0	2	35	2
Finney.....	12	15	1	7	57	2	0	1	1	0	0	0	0	13	109	1
Ford.....	30	6	1	6	66	2	2	0	3	0	0	0	0	9	128	9
Franklin.....	12	17	4	29	55	5	0	5	2	0	0	1	1	12	143	3

TABLE A-5.—CONTINUED. Types of Civil Cases—Year Ending June 30, 1958

COUNTIES	Recovery of money	Damages	Foreclosure	Quiet title	Divorce	Replevin	Ejectment	Injunction	Partition	Tax cases	Habeas corpus	Probate appeals	Other appeals	Miscellaneous	*Total number of cases	Foreign transcript
Geary.....	27	16	0	18	140	4	0	2	1	0	0	1	16	32	257	2
Gove.....	6	2	0	3	9	0	1	0	1	0	0	0	2	2	20	1
Graham.....	18	2	0	14	3	2	0	0	1	0	0	0	2	7	55	1
Grant.....	10	1	2	0	18	0	1	0	0	0	0	0	0	3	35	3
Gray.....	6	3	0	3	6	0	0	0	0	0	0	0	0	2	20	2
Greeley.....	6	0	0	0	1	1	0	0	0	1	0	0	0	0	9	1
Greenwood.....	35	5	0	58	43	6	0	0	7	1	2	1	6	5	169	4
Hamilton.....	5	2	1	3	7	0	0	0	0	0	0	0	0	2	20	0
Harpur.....	6	1	1	10	19	1	0	0	7	1	0	1	0	4	51	1
Harvey.....	40	16	10	23	62	1	1	10	3	5	0	3	24	26	224	10
Haskell.....	11	0	0	1	1	1	0	0	1	0	0	0	0	2	17	0
Hodgeman.....	2	1	0	3	2	0	0	0	2	0	0	1	1	1	12	0
Jackson.....	9	8	0	14	17	0	1	0	0	1	0	1	19	4	75	0
Jefferson.....	23	7	0	27	25	4	0	2	1	0	0	1	0	6	96	6
Jewell.....	5	0	0	14	7	0	0	0	3	0	0	0	3	2	34	1
Johnson.....	118	103	0	41	336	74	1	15	4	2	4	1	71	151	921	96
Kearny.....	4	0	0	2	8	1	0	0	1	0	0	1	0	0	17	1
Kingman.....	9	5	0	6	16	0	0	0	0	1	0	2	1	2	42	0
Kiowa.....	1	3	1	3	5	0	0	0	0	1	0	1	1	1	18	2
Labette.....	32	23	0	18	83	10	0	1	5	2	0	0	3	22	199	2
Lane.....	1	1	1	2	3	0	1	0	0	1	0	0	1	2	13	0
Leavenworth.....	103	2	0	48	168	16	0	6	1	0	105	1	7	29	487	20
Lincoln.....	5	4	0	2	4	0	0	0	6	0	0	0	11	2	34	0
Linn.....	15	0	1	28	17	2	0	2	2	0	0	0	0	6	73	1
Logan.....	4	0	3	10	2	0	0	0	1	0	0	0	0	3	23	2
Lyon.....	24	10	0	32	61	0	0	4	2	0	0	8	6	22	169	4
Marion.....	18	3	2	20	20	1	0	0	5	0	0	1	0	2	72	0
Marshall.....	15	8	3	9	19	0	0	1	0	0	0	0	20	7	88	2
McPherson.....	29	13	2	17	29	1	0	4	4	2	0	1	3	15	116	4
Meade.....	11	9	1	11	4	1	0	0	2	0	0	0	0	6	45	0

TABLE A-5.—CONTINUED. Types of Civil Cases—Year Ending June 30, 1958

COUNTIES	Recovery of money	Damages	Foreclosure	Quiet title	Divorce	Replevin	Ejectment	Injunction	Partition	Tax cases	Habeas corpus	Probate appeals	Other appeals	Miscellaneous	*Total number of cases	Foreign transcript
Miami.....	9	18	0	29	57	6	0	1	3	2	0	2	11	9	147	8
Mitchell.....	4	3	0	4	12	3	0	0	2	1	0	0	0	2	31	3
Montgomery.....	67	26	6	33	181	5	1	6	7	0	1	2	14	38	387	26
Morris.....	9	0	1	18	17	0	0	0	1	0	0	0	0	5	53	1
Morton.....	5	1	1	10	16	1	0	0	1	0	0	0	2	6	43	3
Nemaha.....	3	7	0	6	4	1	0	0	5	1	0	0	18	9	54	4
Neosho.....	30	0	0	12	54	3	0	1	4	0	2	3	8	17	134	4
Ness.....	2	2	0	4	5	0	0	0	1	1	0	0	0	9	25	1
Norton.....	8	2	0	5	18	0	0	0	1	0	0	0	0	2	36	0
Osage.....	12	0	2	30	27	1	0	0	6	1	1	0	1	3	84	6
Osborne.....	7	7	1	16	15	1	0	0	2	1	0	4	0	3	57	6
Ottawa.....	4	0	0	4	6	0	0	0	1	0	0	0	2	2	17	2
Pawnee.....	9	10	0	2	17	0	0	0	2	1	1	0	2	3	47	4
Phillips.....	15	1	0	11	16	0	0	0	2	2	0	0	0	0	47	0
Pottawatomie.....	22	0	0	25	19	1	0	2	2	0	0	3	0	7	81	0
Pratt.....	18	17	0	6	29	3	0	0	4	1	0	0	1	3	85	5
Rawlins.....	2	0	0	7	6	0	0	0	0	0	0	2	2	1	18	0
Reno.....	48	41	0	25	294	24	3	7	5	3	3	4	28	78	563	59
Republic.....	18	1	0	7	14	1	0	0	2	1	0	0	9	20	73	5
Rice.....	5	3	0	8	19	1	0	0	4	4	0	0	4	6	54	5
Riley.....	24	28	0	13	80	6	0	1	3	0	0	1	11	30	197	9
Rock.....	15	5	0	12	18	1	1	2	6	0	0	4	0	13	77	0
Rush.....	9	2	0	3	5	0	0	0	3	1	0	0	0	5	28	0
Russell.....	20	2	0	5	25	2	0	2	1	0	0	1	0	7	66	7
Saline.....	90	9	3	15	214	5	1	5	4	1	1	0	36	59	443	0
Scott.....	6	4	1	1	8	0	0	0	0	2	0	0	0	1	23	0
Sedgewick.....	527	455	174	77	2,299	63	6	39	16	1	14	15	146	582	4,414	243
Seward.....	25	4	3	10	81	3	0	1	0	0	0	1	2	11	141	1
Shawnee.....	548	9	0	40	853	13	4	19	11	0	8	10	72	1,531	1,740	0
Sheridan.....	6	0	0	7	6	0	0	0	0	0	0	1	2	1	23	1

TABLE A-5.—CONCLUDED. Types of Civil Cases—Year Ending June 30, 1958

COUNTRIES	Recovery of money	Damages	Foreclosure	Quiet title	Divorce	Replevin	Ejection	Injunction	Partition	Tax cases	Habeas corpus	Probate appeals	Other appeals	Miscellaneous	*Total number of cases	Foreign transcripts
Sherman.....	17	2	0	6	16	2	0	0	1	0	0	0	1	3	48	0
Smith.....	7	1	0	4	15	1	0	2	5	0	0	3	0	1	39	0
Stafford.....	9	6	1	5	20	1	1	0	3	0	1	1	4	8	60	5
Stanton.....	3	2	0	0	1	0	0	0	1	0	0	0	0	4	11	0
Stevens.....	57	2	1	4	15	1	0	0	2	0	0	1	0	2	85	4
Sumner.....	24	18	1	11	100	1	0	1	2	0	1	1	5	20	185	8
Thomas.....	21	0	0	6	19	0	0	0	4	1	0	0	0	9	60	3
Trego.....	6	2	2	5	8	0	0	0	3	0	0	0	17	4	41	0
Wabaussee.....	5	2	0	7	8	1	0	0	1	0	0	3	3	5	35	1
Wallace.....	4	3	0	2	4	2	0	0	0	0	0	0	3	2	20	3
Washington.....	12	1	0	12	3	2	0	0	3	1	0	0	0	1	35	1
Wichita.....	18	1	1	5	2	0	0	1	3	1	0	0	0	4	36	0
Wilson.....	35	0	0	12	55	2	0	4	1	1	0	0	1	17	128	0
Woodson.....	6	0	0	8	6	2	0	0	2	0	0	0	10	6	51	2
Wyandotte.....	220	436	43	62	1,251	58	2	18	13	7	5	14	145	312	2,586	124
Totals.....	3,142	1,774	307	1,446	8,377	399	36	190	296	66	158	130	850	2,122	19,293	790

* This total does not include foreign transcripts.

TABLE A-6.—SUMMARY OF DISTRICT COURTS—STATE AS A WHOLE
 TYPES OF CIVIL CASES COMMENCED COMPARED WITH 1946-1947-1948-1949-1950-1951-1952-1953-1954-1955-1956-1957 AND 1958

	Year ending June 30, 1946	Year ending June 30, 1947	Year ending June 30, 1948	Year ending June 30, 1949	Year ending June 30, 1950	Year ending June 30, 1951	Year ending June 30, 1952	Year ending June 30, 1953	Year ending June 30, 1954	Year ending June 30, 1955	Year ending June 30, 1956	Year ending June 30, 1957	Year ending June 30, 1958
Number of cases*	22,301	19,788	18,100	16,325	16,380	15,945	16,494	17,956	18,190	18,379	18,999	18,676	19,293
Recovery of money.....	966	1,230	1,559	1,709	1,861	1,971	2,054	1,882	2,708	2,919	2,314	3,077	3,142
Damages.....	806	1,013	998	1,018	1,192	1,000	1,075	1,581	1,307	1,158	1,718	1,200	1,774
Foreclosures.....	111	97	120	174	222	206	172	183	270	237	430	386	307
Quiet title.....	4,134	4,208	3,729	2,835	2,296	2,283	2,053	1,864	1,666	1,805	1,746	1,624	1,446
Divorce.....	13,476	10,247	8,716	7,809	8,092	7,722	8,656	9,223	8,773	8,743	8,566	8,385	8,377
Replevin.....	72	147	159	197	184	157	169	189	199	166	219	370	399
Ejectment.....	63	48	39	16	33	45	55	40	39	46	39	29	36
Injunction.....	274	248	264	213	262	230	253	274	296	233	250	218	190
Partition.....	496	454	404	362	324	314	310	333	285	304	290	251	296
Tax cases.....	97	110	73	65	60	37	33	51	42	24	40	210	66
Habeas corpus.....	55	73	95	78	94	79	89	80	92	116	131	120	158
Probate appeals.....	91	94	127	133	143	146	127	134	128	135	120	140	130
Other appeals.....	284	383	521	445	432	446	445	520	766	810	1,089	670	850
Miscellaneous.....	1,380	1,436	1,296	1,271	1,185	1,309	1,448	1,602	1,622	1,683	2,047	1,996	2,122

* Does not include 790 foreign transcripts included in the total of 20,083 on Table A-2, June 30, 1958, or 852 foreign transcripts included in the total of 19,528 on Table A-2, June 30, 1957, or 795 foreign transcripts included in the total of 19,794 on Table A-2, June 30, 1956, or 790 foreign transcripts included in the total of 19,169 on Table A-2, June 30, 1955, or 348 foreign transcripts included in the total of 18,538 on Table A-2, June 30, 1954, or 309 foreign transcripts included in the total of 18,265 on Table A-2, June 30, 1953, or 325 foreign transcripts included in the total of 17,274 on Table A-2, June 30, 1952, or 596 foreign transcripts included in the total of 16,541 on Table A-2, June 30, 1951, or 579 foreign transcripts included in the total of 16,959 on Table A-2, June 30, 1950, or 486 foreign transcripts included in the total of 16,811 on Table A-2, June 30, 1949.

NOTE.—Personal tax warrants are not included as cases in any of these tables.

TABLE B-1.—CONTINUED. Disposition of Criminal Cases—Year Ending June 30, 1958

COUNTIES	Number of cases	Cases not tried			Trials					Appeals (Superior court)	Paroles granted		
		Dismissed	Plea of guilty as charged	Plea of guilty of lesser offense	Total number	Acquitted	Convicted of crime charged	Convicted of lesser offense	Mis-trials			Time from filing to trial	
												Number	Percent less than 6 months
Ellis.....	18	5	13	0	0	0	0	0	0	0	0	2	
Ellsworth.....	8	7	1	0	0	0	0	0	0	0	0	0	
Finney.....	85	23	53	0	2	7	0	0	0	78	0	35	
Ford.....	34	16	16	0	2	0	2	0	0	100	0	8	
Franklin.....	47	22	17	5	2	1	0	0	0	0	0	6	
Geary.....	48	15	28	0	1	4	0	0	0	40	0	13	
Gove.....	3	1	2	0	0	0	0	0	0	0	0	1	
Graham.....	18	7	9	0	1	0	1	0	0	100	0	4	
Grant.....	5	0	5	0	0	0	0	0	0	0	0	4	
Gray.....	5	0	5	0	0	0	0	0	0	0	0	1	
Greeley.....	3	1	2	0	0	0	0	0	0	0	0	2	
Greenwood.....	14	3	9	0	0	0	0	0	0	1	50	0	
Hamilton.....	5	2	3	0	0	0	0	0	0	0	0	5	
Harper.....	26	0	11	5	10	0	0	0	0	9	90	1	
Harvey.....	48	15	16	12	5	2	2	0	0	3	60	20	
Haskell.....	3	1	2	0	0	0	0	0	0	0	0	0	
Hodgeman.....	8	2	1	1	4	2	0	0	0	1	25	1	
Jackson.....	7	1	3	0	0	0	1	0	0	1	100	2	
Jefferson.....	14	0	13	0	1	0	0	0	0	0	0	5	
Jewell.....	5	2	3	0	0	0	0	0	0	0	0	2	
Johnson.....	89	27	49	1	12	11	0	0	0	9	75	24	
Kearny.....	4	2	2	1	0	0	0	0	0	0	0	1	
Kingman.....	10	2	7	1	0	0	0	0	0	0	0	4	
Kiowa.....	10	2	10	0	0	0	0	0	0	0	0	7	
Labette.....	27	15	10	0	2	0	0	0	0	2	100	3	
Lane.....	2	1	0	1	0	0	0	0	0	0	0	1	
Leavenworth.....	64	27	22	9	6	4	0	0	0	2	33	21	
Lincoln.....	5	1	4	0	0	0	0	0	0	0	0	3	
Linn.....	3	2	0	0	1	0	0	0	0	1	100	0	
Logan.....	7	3	3	0	1	0	0	0	0	1	100	0	

TABLE B-1.—CONTINUED. Disposition of Criminal Cases—Year Ending June 30, 1958

COUNTRIES	Number of cases	Cases not tried			Trials						Appeals (Supreme court)	Paroles granted	
		Dis-missed	Plea of guilty as charged	Plea of guilty of lesser offense	Total number	Ac-quitted	Con-victed of crime charged	Con-victed of lesser offense	Mis-trials	Time from filing to trial			
										Number less than 6 months			Percent less than 6 months
Lyron.....	36	19	12	0	5	1	0	0	4	80	0	6	
Merion.....	10	3	7	0	0	0	0	0	0	0	0	5	
Marshall.....	6	3	1	2	0	0	0	0	0	0	0	2	
McPherson.....	25	9	16	0	0	0	0	0	0	0	0	3	
Meads.....	2	0	2	0	0	0	0	0	0	0	0	1	
Miami.....	21	3	11	5	2	0	0	0	0	100	0	6	
Mitchell.....	11	1	10	0	0	0	0	0	0	0	0	5	
Montgomery.....	122	21	70	3	28	2	23	2	1	25	89	45	
Morris.....	14	7	1	0	6	0	6	0	0	6	100	4	
Morton.....	8	0	6	1	1	0	0	0	1	1	100	4	
Nemaha.....	7	0	6	0	1	0	1	0	0	1	100	1	
Nesho.....	20	8	8	1	3	2	0	0	1	33	0	4	
Ness.....	2	2	0	0	0	0	0	0	0	0	0	0	
Norton.....	6	3	3	0	0	3	0	0	0	0	0	0	
Osage.....	20	4	15	0	1	0	1	0	0	0	0	7	
Osborne.....	0	0	0	0	0	0	0	0	0	0	0	0	
Ottawa.....	1	0	1	0	0	0	0	0	0	0	0	0	
Pawnee.....	26	4	16	5	1	0	0	1	0	100	0	6	
Phillips.....	12	0	10	0	0	0	0	0	0	0	0	1	
Pottawatomie.....	16	2	12	1	3	0	3	0	0	0	0	4	
Pratt.....	21	3	18	0	0	0	0	0	0	0	0	10	
Rawlins.....	9	4	5	0	0	0	0	0	0	0	0	3	
Reno.....	164	56	92	6	10	4	4	1	0	8	80	61	
Republic.....	12	5	7	0	1	0	1	0	0	0	0	13	
Rice.....	10	3	7	0	0	0	0	0	0	0	0	3	
Riley.....	50	14	31	0	5	1	0	4	0	80	0	10	
Rooks.....	7	4	1	0	2	0	0	0	1	50	0	2	
Rush.....	2	0	1	0	1	0	0	0	1	100	0	0	
Russell.....	7	0	5	0	0	0	0	0	0	0	0	0	
Saline.....	94	49	36	0	9	0	3	1	1	67	0	16	

TABLE B-1.—CONCLUDED. Disposition of Criminal Cases—Year Ending June 30, 1958

COUNTIES	Cases not tried			Trials						Appeals (Su-preme court)	Paroles granted		
	Number of cases	Dis-missed	Plea of guilty as charged	Plea of guilty or lesser offense	Total number	Ac-quitted	Con-victed of crime charged	Con-victed of lesser offense	Mis-trials			Time from filing to trial	
												Number less than 6 months	Percent less than 6 months
Scott.....	10	0	9	0	1	1	0	0	0	1	100	4	
Sedgewick.....	1,044	222	427	345	50	15	32	3	0	45	90	389	
Seward.....	38	14	19	0	5	0	5	0	0	1	20	8	
Shawnee.....	432	176	114	136	6	0	6	0	0	3	50	66	
Sheridan.....	1	1	0	0	0	0	0	0	0	0	0	0	
Sherman.....	8	1	5	0	2	2	0	0	0	2	100	1	
Smith.....	1	0	1	0	0	0	0	0	0	0	0	1	
Stafford.....	18	1	16	0	1	0	0	1	0	1	100	12	
Stanton.....	2	0	2	0	0	0	0	0	0	0	0	2	
Stevens.....	5	0	2	0	3	1	2	0	0	3	100	1	
Sumner.....	33	15	17	0	1	1	0	0	0	1	100	1	
Thomas.....	7	0	4	0	3	0	3	0	0	3	100	4	
Trego.....	8	2	5	0	1	1	0	0	0	0	0	0	
Wabunsee.....	7	1	6	0	0	0	0	0	0	0	0	1	
Wallace.....	2	0	1	0	1	0	1	0	0	1	100	1	
Washington.....	5	1	4	0	0	0	0	0	0	0	0	2	
Wichita.....	3	0	3	0	0	0	0	0	0	0	0	0	
Wilson.....	17	6	7	0	4	0	3	0	0	3	75	8	
Woodson.....	4	0	2	1	1	0	1	0	0	1	100	3	
Wyandotte.....	338	207	30	49	52	14	27	11	0	25	48	39	
Totals.....	4,032	1,345	1,703	656	328	66	211	40	11	236	72	1,127	

SUMMARY OF DISTRICT COURTS—BY COUNTIES

TABLE B-2.—TYPES OF FELONIES—YEAR ENDING JUNE 30, 1958

Counties	Murder	Manslaughter	Rape	Robbery	Felonious assault	Other crimes against person	Arson	Forgery	Grand larceny	Auto larceny	Embezzlement	Burglary	Other crimes against property	Desertion (wife or child)	Narcotics	Bad checks	Other felonies	Total felonies
Allen.....	0	1	0	0	1	0	0	0	0	0	0	0	0	0	0	1	0	19
Anderson.....	0	0	0	0	0	0	0	0	0	0	0	0	0	0	0	0	0	0
Atchison.....	0	1	2	0	0	1	0	0	0	0	0	0	0	0	0	0	1	38
Barber.....	0	0	0	0	0	0	0	0	2	0	1	2	1	0	0	0	1	11
Barton.....	0	0	0	0	0	0	0	0	2	0	0	0	0	0	0	0	0	18
Bourbon.....	0	0	1	1	3	1	0	2	4	0	0	10	0	5	0	0	0	29
Brown.....	0	0	0	0	1	0	0	0	0	0	0	0	0	0	0	0	0	14
Butler.....	0	1	2	0	4	0	0	16	10	0	0	0	6	10	0	2	0	120
Chase.....	1	0	0	0	0	0	0	0	1	0	1	1	0	0	0	0	0	8
Chautauqua.....	0	0	0	0	0	0	1	0	0	0	0	0	0	0	0	0	1	5
Cherokee.....	0	0	0	0	0	1	0	0	11	0	0	4	1	1	0	0	0	20
Cheyenne.....	0	0	0	0	0	0	0	0	1	0	0	0	0	0	0	0	0	2
Clark.....	0	0	0	0	0	0	0	0	0	0	0	0	0	0	0	0	0	2
Clay.....	0	0	0	0	0	0	0	1	0	0	0	1	0	0	0	0	0	5
Cloud.....	0	0	0	0	0	0	0	0	0	0	0	0	0	0	0	0	0	4
Coffey.....	0	0	0	0	0	0	0	0	0	0	0	0	0	1	0	0	0	2
Comanche.....	0	0	0	0	0	0	0	0	0	0	0	0	0	0	0	0	0	1
Cowley.....	0	0	4	1	7	2	0	7	9	0	0	8	3	14	3	0	1	58
Crawford.....	0	0	1	1	0	0	1	6	0	0	0	0	0	0	0	0	0	42
Decatur.....	0	0	0	0	0	2	0	0	0	0	0	0	0	0	0	0	0	1
Dickinson.....	0	0	1	1	0	1	0	5	2	1	0	3	0	0	0	0	1	15
Doniphan.....	1	2	2	0	1	0	0	4	17	4	0	0	0	0	0	0	0	4
Douglas.....	0	0	0	0	1	0	0	0	0	0	0	0	0	0	0	0	0	0
Edwards.....	0	0	0	0	0	0	0	0	0	0	0	0	0	0	0	0	0	0
Elk.....	0	0	0	0	0	0	0	0	0	1	0	1	0	0	0	0	0	6

TABLE B-2.—CONTINUED. Types of Felonies—Year Ending June 30, 1958

COUNTIES	Murder	Manslaughter	Rape	Robbery	Felonious assault	Other crimes against person	Arson	Forgery	Grand larceny	Auto larceny	Embezzlement	Burglary	Other crimes against property	Desertion (wife or child)	Narcotics	Bad checks	Other felonies	Total felonies
Lyon.....	0	0	1	2	0	0	0	3	0	0	1	6	1	0	0	0	1	19
Marion.....	0	0	0	0	0	0	0	0	0	0	0	1	0	0	0	0	0	11
Marshall.....	0	0	0	0	0	0	0	0	0	0	0	1	0	0	0	0	0	3
McPherson.....	0	0	1	0	0	0	0	0	2	2	0	1	2	0	0	0	0	12
Meade.....	0	0	0	0	0	0	0	0	0	0	0	1	0	0	0	0	0	1
Miami.....	0	0	0	1	1	0	0	1	0	1	0	0	14	1	0	0	0	19
Mitchell.....	0	0	0	0	0	0	0	1	0	0	0	27	0	0	0	0	0	7
Montgomery.....	0	0	0	0	0	0	0	1	2	1	0	3	3	15	1	30	2	119
Morris.....	0	0	0	0	0	0	0	0	0	0	0	4	0	0	0	2	1	8
Morton.....	0	0	0	0	0	0	0	1	0	0	0	0	0	0	0	0	0	0
Nemaha.....	0	0	0	0	0	0	0	0	1	0	0	0	0	0	0	0	0	0
Neosho.....	0	0	0	0	0	0	0	0	0	0	0	0	1	1	0	0	0	17
Ness.....	0	0	0	0	0	0	0	1	0	0	0	0	0	0	0	0	0	0
Newton.....	0	0	0	0	0	0	0	0	0	0	0	0	0	1	0	0	0	0
Osage.....	0	0	0	0	0	0	0	2	4	0	1	2	1	3	0	1	3	18
Oshorne.....	0	0	0	0	0	0	0	0	0	0	0	0	0	0	0	0	0	0
Ottawa.....	0	0	0	0	0	0	0	0	0	0	0	0	0	0	0	0	0	0
Payne.....	0	0	0	0	0	0	0	0	3	0	1	2	0	0	0	9	0	28
Phillips.....	0	0	0	0	0	0	0	0	0	0	0	1	0	0	0	0	0	0
Pottawatomie.....	0	0	0	0	1	0	0	0	1	0	0	2	2	2	0	0	1	10
Pratt.....	0	0	1	0	0	1	0	4	1	1	0	7	0	0	0	2	2	21
Ravilins.....	0	0	0	0	0	0	0	0	0	0	0	0	0	0	0	1	3	3
Reno.....	0	0	0	0	0	0	0	12	6	3	2	24	3	233	0	16	3	118
Republic.....	0	0	0	0	0	0	0	0	0	0	0	1	2	0	0	3	0	9
Rice.....	0	0	0	0	0	0	0	1	2	0	1	3	1	1	0	1	0	11
Riley.....	0	0	1	0	0	0	0	5	5	1	1	4	5	1	0	9	0	36
Rooks.....	0	0	0	0	0	0	0	0	0	0	0	2	0	0	0	0	0	7
Rush.....	0	0	0	0	0	0	0	0	0	0	0	0	0	0	0	0	0	0
Russell.....	0	0	0	0	0	0	0	0	0	0	0	0	0	0	0	0	0	4
Saline.....	0	0	2	0	0	0	0	13	6	0	2	13	0	0	0	3	0	59

TABLE B-2.—Concluded. Types of Felonies—Year Ending June 30, 1958

COUNTIES	Murder	Manslaughter	Rape	Robbery	Felonious assault	Other crimes against person	Arson	Forgery	Grand larceny	Auto larceny	Embezzlement	Burglary	Other crimes against property	Desertion (wife or child)	Narcotics	Bad checks	Other felonies	Total felonies
Scott.....	0	1	1	0	1	2	0	0	2	0	1	2	0	0	0	0	0	10
Sedgewick.....	9	4	8	31	12	10	1	34	35	0	11	117	25	39	9	93	16	454
Seward.....	0	0	0	2	2	1	0	7	0	2	0	0	0	0	0	18	1	37
Shawnee.....	2	5	4	5	4	11	0	22	9	6	3	47	6	33	1	24	27	209
Sheridan.....	0	0	0	0	0	0	0	0	0	0	0	0	0	1	0	0	0	1
Sherman.....	0	0	1	0	0	0	0	1	1	0	0	1	0	0	0	1	0	5
Smith.....	0	0	0	0	0	0	0	0	0	0	0	1	0	0	0	0	0	1
Stafford.....	0	1	0	0	0	0	0	2	1	0	0	3	0	2	0	1	2	12
Stanton.....	0	0	0	0	0	0	0	0	0	0	0	0	0	0	0	0	0	1
Stevens.....	0	0	0	0	0	0	0	0	0	0	0	1	0	0	0	1	0	2
Sumner.....	0	0	0	6	0	0	0	0	3	0	1	1	0	2	1	2	10	26
Thomas.....	0	0	0	0	0	0	0	1	0	0	0	0	0	0	0	4	0	5
Trego.....	0	0	0	0	0	0	0	2	0	0	0	0	0	0	0	0	0	4
Wabunsee.....	0	0	0	0	0	0	0	0	0	0	0	4	0	0	0	0	0	6
Wallace.....	0	0	0	0	0	0	0	0	0	0	0	1	0	0	0	0	1	2
Washington.....	1	0	1	0	0	0	0	0	0	0	0	3	0	0	0	0	0	5
Wichita.....	1	0	0	0	0	0	0	0	1	0	0	0	0	0	0	0	1	3
Wilson.....	0	4	1	0	0	0	0	0	0	0	0	0	1	1	0	6	0	14
Woodson.....	0	1	0	0	0	0	0	0	0	0	0	1	0	0	0	0	0	2
Wyandotte.....	4	1	12	20	10	7	1	1	13	5	0	50	8	8	0	3	0	143
Totals.....	25	37	67	101	93	66	21	251	160	56	44	526	137	249	18	410	126	2,487

SUMMARY OF DISTRICT COURTS—BY COUNTIES
 TABLE B-3.—TYPES OF MISDEMEANORS AND TOTALS OF CRIMINAL CASES—YEAR ENDING JUNE 30, 1958

COUNTIES	Type of misdemeanors										Totals of criminal cases			
	Assault	Petty larceny	Liquor	Disturb- ing peace	Traffic offense	Bad checks	Other misde- meanors	Total misde- meanors	Number of felonies	Number of misde- meanors	Police court appeals	Total of criminal cases		
Allen.....	0	0	4	0	2	0	0	6	19	6	6	31		
Anderson.....	0	0	1	0	0	2	0	3	8	3	0	11		
Atchison.....	0	1	0	2	0	0	2	5	28	3	3	46		
Barber.....	0	0	1	0	0	0	0	1	11	1	0	12		
Barton.....	0	0	2	0	1	0	0	3	18	3	23	44		
Bourbon.....	3	0	6	0	0	0	1	10	20	10	0	30		
Brown.....	1	0	1	0	0	0	1	3	14	3	0	17		
Butler.....	1	0	69	0	3	3	1	77	120	77	0	197		
Chas.	0	0	1	0	0	0	0	1	3	1	0	4		
Chautauqua.....	0	0	0	0	0	0	0	0	5	0	0	5		
Cherokee.....	1	0	1	0	4	0	0	6	20	6	7	33		
Cheyenne.....	0	0	0	0	0	0	0	0	2	0	0	2		
Clark.....	0	0	0	0	0	0	0	0	2	0	0	2		
Clear.....	0	0	0	0	0	1	1	2	5	2	0	7		
Cloud.....	0	0	0	0	0	0	0	0	4	0	0	4		
Coffey.....	0	0	6	0	0	0	0	6	2	6	0	8		
Comanche.....	0	0	0	0	0	0	0	0	0	0	0	0		
Cowley.....	0	0	10	0	0	0	1	11	58	11	0	69		
Crawford.....	0	0	17	0	1	5	0	23	42	23	0	65		
Decatur.....	0	0	0	0	0	0	0	0	1	0	0	1		
Dickinson.....	0	0	2	0	0	0	0	2	15	2	0	17		
Doniphan.....	0	0	0	0	0	0	0	0	4	0	1	5		
Douglas.....	0	0	28	0	2	0	0	30	67	30	3	100		
Edwards.....	0	0	3	0	0	0	0	3	8	3	0	11		
Elk.....	0	0	0	0	0	0	0	0	6	0	0	6		

TABLE B-3.—CONTINUED. Types of Misdemeanors and Totals of Criminal Cases—Year Ending June 30, 1958

COUNTIES	Type of misdemeanors							Totals of criminal cases				
	Assault	Petty larceny	Liquor	Disturb- ing peace	Traffic offense	Bad checks	Other misd- meanors	Total misd- meanors	Number of felonies	Number of misd- meanors	Police court appeals	Total of criminal cases
Ellis.....	0	0	1	0	0	4	0	5	13	5	0	18
Ellsworth.....	0	0	0	0	0	0	0	0	2	0	0	2
Finney.....	1	0	6	0	0	0	0	7	67	7	0	74
Ford.....	0	0	0	0	1	1	0	2	35	2	0	37
Franklin.....	1	1	11	0	2	0	2	17	24	17	5	46
Geary.....	0	0	0	0	0	0	0	0	51	0	9	60
Gove.....	0	0	1	0	0	0	0	1	1	1	0	2
Graham.....	0	0	1	0	1	0	0	2	13	3	0	15
Grant.....	0	0	2	1	0	0	0	3	2	2	0	5
Gray.....	0	0	0	0	0	0	0	0	5	0	0	5
Greeley.....	0	0	1	0	1	0	0	2	0	2	0	2
Greenwood.....	0	0	0	0	0	0	0	0	13	0	0	13
Hamilton.....	0	0	0	0	0	0	0	0	4	0	0	4
Harper.....	1	0	1	0	1	0	0	3	20	3	0	23
Harvey.....	0	0	9	0	5	0	1	15	24	15	9	48
Haskell.....	0	0	0	0	0	0	0	0	4	0	0	4
Hodgeman.....	0	0	4	0	0	0	0	4	4	4	0	8
Jackson.....	0	0	0	0	0	0	0	0	5	0	0	5
Jefferson.....	0	0	2	0	1	0	0	3	12	3	0	15
Jewell.....	0	0	0	0	0	0	0	0	3	0	0	3
Johnson.....	2	2	10	3	2	1	5	25	85	25	0	110
Kearny.....	0	0	3	0	0	0	0	3	8	3	0	6
Kingman.....	0	0	0	0	0	0	0	2	11	2	0	13
Kiowa.....	0	0	0	0	0	0	1	1	0	1	0	10
Labette.....	0	0	2	0	0	0	2	4	19	4	1	24
Lane.....	0	0	0	0	0	0	0	0	0	0	0	0
Leavenworth.....	1	2	5	0	6	0	2	16	42	16	0	58
Lincoln.....	0	0	1	0	1	0	0	1	6	1	0	7
Linn.....	0	0	0	0	2	0	0	2	3	2	0	5
Logan.....	0	0	3	0	1	0	0	4	4	4	0	8

TABLE B-3.—CONTINUED. Types of Misdemeanors and Totals of Criminal Cases—Year Ending June 30, 1958

COUNTIES	Type of misdemeanors							Totals of criminal cases				
	Assault	Petty larceny	Liquor	Disturbing peace	Traffic offense	Bad checks	Other misde-meanors	Total misde-meanors	Number of felonies	Number of misde-meanors	Police court appeals	Total of criminal cases
Lyon.....	0	0	8	1	0	0	4	13	19	13	0	32
Marion.....	0	0	3	0	0	0	0	3	11	3	0	14
Marshall.....	0	0	0	0	0	1	1	2	3	1	0	6
McPherson.....	0	0	5	0	1	0	0	8	12	8	0	20
Meade.....	0	0	1	0	0	0	0	1	1	1	0	2
Miami.....	0	0	0	0	1	0	0	1	19	1	0	20
Mitchell.....	0	0	0	0	0	0	6	6	7	6	0	13
Montgomery.....	2	1	9	2	1	4	2	21	119	21	2	142
Morris.....	0	0	7	0	0	0	0	7	7	7	0	14
Morton.....	0	0	0	0	1	0	0	1	8	1	0	9
Nemaha.....	1	0	2	0	0	0	1	4	2	4	0	6
Neosho.....	0	0	2	0	0	1	1	4	17	4	0	21
Ness.....	0	0	0	0	0	0	0	0	0	0	0	0
Norton.....	0	0	0	0	0	0	1	1	5	1	0	6
Osage.....	2	0	3	0	1	0	0	6	18	6	0	24
Osborne.....	0	0	0	0	0	0	3	3	2	3	0	3
Ottawa.....	0	0	0	0	1	0	0	1	0	0	0	3
Paynee.....	0	0	0	0	0	0	0	0	28	0	0	28
Phillips.....	0	0	0	0	0	0	0	0	2	0	0	2
Pottawatomie.....	2	1	1	0	2	0	0	6	10	6	0	16
Pratt.....	0	0	0	0	0	0	0	1	21	1	0	22
Ravalli.....	0	0	2	0	0	0	0	2	3	2	0	5
Reno.....	0	1	29	0	6	0	17	53	118	53	0	171
Republic.....	0	0	0	0	0	0	0	0	9	0	0	9
Rice.....	0	0	1	0	1	0	0	2	11	2	0	13
Riley.....	1	0	1	0	0	0	1	3	36	3	1	40
Rooks.....	0	0	1	0	0	0	0	1	7	1	0	8
Rush.....	0	0	1	0	0	0	0	1	4	1	0	5
Russell.....	0	0	1	0	0	1	0	2	1	2	0	3
Saline.....	3	0	5	0	0	1	1	10	59	10	23	92

TABLE B-3.—CONCLUDED. Types of Misdemeanors and Totals of Criminal Cases—Year Ending June 30, 1958

COUNTRIES	Type of misdemeanors							Totals of criminal cases				
	Assault	Petty larceny	Liquor	Disturb- ing peace	Traffic offense	Bad checks	Other misdemeanors	Total misdemeanors	Number of felonies	Number of misdemeanors	Police court appeals	Total of criminal cases
Scott.....	0	1	1	0	0	0	0	2	10	2	0	12
Sedgwick.....	3	2	126	0	4	10	5	150	454	150	521	1,125
Seward.....	1	1	2	0	0	0	2	6	37	0	4	47
Shawnee.....	1	1	43	1	11	0	4	61	209	61	159	429
Sheridan.....	0	0	0	0	0	0	0	0	1	0	0	1
Sherman.....	2	0	1	0	0	0	5	8	5	8	0	13
Smith.....	0	0	0	0	0	0	0	7	1	0	0	1
Stafford.....	0	0	6	0	1	0	0	7	12	7	0	19
Stanton.....	0	0	1	1	0	0	0	1	1	1	0	2
Stevens.....	0	0	3	0	0	0	0	3	2	3	0	5
Sumner.....	0	0	1	0	0	1	2	4	26	4	2	32
Thomas.....	0	0	1	0	0	0	3	4	5	4	0	6
Trego.....	0	0	2	0	1	0	0	3	4	3	0	7
Wabunsee.....	0	0	0	0	0	0	0	0	6	0	0	6
Wallace.....	0	0	0	0	0	0	0	0	2	0	0	2
Washington.....	0	0	0	0	0	0	0	0	5	0	0	5
Wichita.....	0	0	0	0	0	0	0	0	3	0	0	3
Wilson.....	1	0	0	0	0	0	1	2	14	2	0	16
Woodson.....	0	0	2	0	0	0	0	2	2	2	0	4
Wyandotte.....	6	0	3	0	8	0	0	17	143	17	221	381
Totals.....	37	14	490	13	77	36	80	747	2,487	747	1,001	4,235

SUMMARY OF DISTRICT COURTS—STATE AS A WHOLE
TABLE B-4.—NATURE OF CRIMES

	1942	1943	1949	1950	1951	1952	1953	1954	1955	1956	1957	1958
Felonies:												
Murder.....	29	35	39	37	29	37	45	29	37	25	39	25
Manslaughter.....	13	12	11	24	28	34	28	40	31	38	36	37
Rape.....	53	52	57	63	56	68	68	61	89	64	112	67
Robbery.....	65	21	50	78	78	77	72	72	71	112	69	101
Felonious assault.....	26	45	71	98	85	90	84	93	92	79	83	93
Other crimes against person.....	16	11	54	46	61	40	44	58	73	14	51	66
Arson.....	13	13	17	14	12	12	14	20	13	14	25	21
Forgery.....	153	133	210	241	191	180	221	234	212	256	223	251
Grand larceny.....	303	194	246	298	325	277	341	305	252	287	468	260
Auto larceny.....	48	41	51	70	51	56	63	61	43	52	37	56
Embezzlement.....	24	17	21	30	22	19	37	33	35	31	27	44
Burglary.....	177	133	284	346	337	294	279	345	347	342	426	526
Other crimes against property.....	37	24	81	71	84	79	76	79	80	113	109	137
Desertion (wife or child).....	103	71	184	209	176	237	257	287	302	267	220	249
Narcotics.....	8	2	13	3	2	7	6	4	9	10	16	18
Bad checks.....	50	22	183	212	191	174	217	256	286	355	339	410
Other felonies.....	61	111	38	67	46	67	74	49	95	70	87	126
Total felonies.....	1,235	937	1,610	1,907	1,777	1,762	1,943	2,026	2,019	2,188	2,367	2,487
Misdemeanors:												
Assault.....	41	71	60	38	46	34	48	40	28	27	45	37
Petty larceny.....	39	36	44	38	44	31	15	23	17	16	23	14
Liquor.....	535	339	286	185	239	287	319	319	388	438	617	490
Disturbing the peace.....	23	12	20	23	20	9	13	8	15	12	15	13
Traffic offense.....	50	89	86	56	35	34	50	43	130	49	115	77
Bad checks.....	3	19	1	14	21	6	0	1	22	0	4	36
Other misdemeanors.....	93	121	262	55	66	99	59	41	76	57	90	80
Total misdemeanors.....	784	687	759	409	471	500	504	475	676	599	909	747
Total cases*.....	2,019	1,624	2,369	2,316	2,248	2,262	2,447	2,501	2,695	2,787	3,276	3,234

* Does not include 1,001 Police Court Appeals in the total of 3,234 cases June 30, 1958, or 706 Police Court Appeals in the total of 3,982 cases June 30, 1957, or 926 Police Court Appeals in the total of 3,713 cases June 30, 1956, or 505 Police Court Appeals in the total of 2,695 cases June 30, 1955, or 559 Police Court Appeals in the total of 2,501 cases June 30, 1954, or 543 Police Court Appeals in the total of 2,447 cases June 30, 1953, or 632 Police Court Appeals in the total of 2,262 cases June 30, 1952, or 440 Police Court Appeals in the total of 2,248 cases June 30, 1951, or 461 Police Court Appeals in the total of 2,316 cases June 30, 1950.

PROBATE COURTS
TABLE C-1.—SUMMARY OF BUSINESS HANDLED—YEAR ENDING JUNE 30, 1958

Counties	Estates of decedents		Guardianships		Trusts under supervision	Juvenile cases	Habeas corpus hearings	Orders in absence of district judge	Adoption proceedings	Insanity hearings	Determination of descent	Miscellaneous	Foreign transcripts
	Opened during year	Closed during year	Opened during year	Closed during year									
Allen.....	66	54	73	8	7	4	0	0	8	17	37	0	14
Anderson.....	35	23	51	5	3	8	0	0	5	9	11	1	4
Atchison.....	55	57	18	8	5	13	0	0	10	0	42	1	3
Barber.....	36	32	10	7	7	7	0	4	5	1	16	8	18
Barton.....	113	85	40	19	30	41	0	3	24	57	24	6	34
Bourbon.....	46	37	13	6	4	0	0	0	4	29	37	0	7
Brown.....	49	38	19	9	13	0	0	4	4	8	27	8	11
Butler.....	73	60	22	8	10	23	0	0	38	23	53	0	44
Chase.....	17	15	3	1	3	2	0	0	2	2	6	1	7
Chautauqua.....	20	24	5	5	4	0	1	0	5	4	18	0	16
Cherokee.....	71	51	12	11	9	0	0	0	11	16	46	0	27
Cheyenne.....	18	8	6	6	3	0	0	0	3	2	14	0	14
Clark.....	16	9	6	2	7	2	0	0	2	2	17	0	12
Clay.....	59	53	9	6	9	0	0	0	5	12	14	3	16
Cloud.....	53	50	13	5	12	5	0	0	1	27	19	7	9
Coffey.....	43	36	10	4	4	0	0	0	1	7	16	1	10
Comanche.....	7	4	11	4	0	1	0	0	0	0	2	0	10
Cowley.....	115	101	30	16	11	55	0	0	41	9	47	5	31
Crawford.....	65	85	42	12	8	0	0	0	14	50	44	0	30
Decatur.....	20	15	5	3	1	0	0	0	7	0	11	0	0
Dickinson.....	58	66	57	8	31	19	0	18	10	21	20	5	13
Doniphan.....	49	22	13	2	7	11	0	0	8	15	17	3	4
Douglas.....	59	64	25	8	12	20	0	0	19	44	24	0	1
Edwards.....	32	19	3	4	0	7	0	0	4	8	12	1	13
Elk.....	25	21	5	2	2	0	0	0	2	6	6	2	7

TABLE C-1.—CONTINUED. Summary of Business Handled—Year Ending June 30, 1958

COUNTRIES	Estates of decedents		Guardianships		Trusts under supervision	Juvenile cases	Habeas corpus hearings	Orders in absence of district judge	Adoption proceedings	Insanity hearings	Determination of descent	Miscellaneous	Foreign transcripts
	Opened during year	Closed during year	Opened during year	Closed during year									
Ellis.....	53	44	21	6	6	11	0	2	4	8	14	14	65
Ellsworth.....	51	53	11	2	4	0	0	1	4	6	3	0	25
Finney.....	26	31	16	5	2	17	0	6	8	21	16	0	13
Ford.....	44	37	13	9	3	58	0	0	13	9	24	11	17
Franklin.....	43	46	29	13	17	23	0	1	9	22	27	0	11
Geary.....	44	34	19	7	6	31	0	21	42	17	17	5	10
Gove.....	8	11	1	0	0	1	0	3	2	3	14	4	14
Graham.....	39	24	6	2	0	0	0	0	2	4	0	3	22
Grant.....	2	5	2	1	3	0	0	0	1	1	8	1	17
Gray.....	28	9	4	4	3	0	0	0	6	11	15	0	11
Greedy.....	6	3	6	6	2	0	0	0	0	0	7	0	19
Greenwood.....	34	47	6	0	4	0	0	0	7	2	6	0	39
Hamilton.....	11	8	3	0	2	4	0	1	0	11	8	0	23
Harper.....	42	48	8	9	17	9	0	6	4	3	17	0	13
Harvey.....	69	51	31	4	22	57	0	5	13	35	21	0	20
Haskell.....	11	9	10	5	0	0	0	0	4	0	6	0	15
Hodgeman.....	17	10	11	2	2	0	0	1	0	0	7	2	24
Jackson.....	38	30	15	3	6	3	0	4	5	15	19	3	12
Jefferson.....	38	25	19	5	2	0	0	3	7	5	27	1	17
Jewell.....	35	28	9	5	1	4	0	0	0	8	32	0	10
Johnson.....	113	100	96	26	50	44	0	0	88	62	62	26	17
Kearny.....	12	6	3	2	0	0	0	0	2	5	5	0	19
Kingman.....	44	38	13	6	3	5	0	0	5	8	14	8	14
Kiowa.....	17	13	14	2	1	0	0	0	1	1	10	0	0
Labette.....	63	48	17	10	11	13	0	0	13	55	34	16	13
Lane.....	15	9	0	0	0	0	0	0	1	3	5	2	15
Leavenworth.....	92	84	22	13	17	40	0	0	25	35	35	4	11
Lincoln.....	38	30	2	2	2	3	0	0	3	3	10	3	12
Lin..	34	25	7	3	7	1	1	0	4	10	20	0	5
Logan.....	6	8	4	7	1	0	0	0	0	0	9	0	17

TABLE C-1.—CONTINUED. Summary of Business Handled—Year Ending June 30, 1958

COUNTIES	Estates of decedents		Guardianships		Trusts under supervision	Juvenile cases	Habeas corpus hearings	Orders in absence of district judge	Adoption proceedings	Insanity hearings	Determination of descent	Miscellaneous	Foreign transcripts
	Opened during year	Closed during year	Opened during year	Closed during year									
Lyon.....	65	66	25	5	15	42	0	0	12	5	42	0	15
Marion.....	47	44	19	13	20	0	0	0	3	11	37	4	20
Marshall.....	72	73	18	9	10	4	0	1	6	14	29	10	4
McPherson.....	91	69	21	5	17	4	0	0	21	16	41	0	8
Meade.....	7	19	5	0	3	1	0	0	3	4	10	0	22
Miami.....	42	59	17	7	10	0	0	21	11	81	24	0	8
Mitchell.....	55	47	12	1	1	6	0	0	3	9	4	1	12
Montgomery.....	93	93	86	18	18	31	1	8	37	37	58	12	8
Morris.....	25	16	46	8	2	0	0	0	4	9	21	4	14
Morton.....	16	7	3	3	1	0	0	0	2	2	9	0	22
Nemaha.....	43	34	28	1	8	0	0	0	2	7	21	0	0
Neosho.....	60	63	17	19	6	7	0	0	11	13	33	4	3
Ness.....	32	20	4	6	4	4	0	0	1	2	8	2	24
Norton.....	29	29	9	5	2	18	0	0	1	15	16	1	16
Osage.....	33	30	6	10	12	13	0	2	3	12	15	0	21
Osborne.....	49	42	4	2	6	0	0	0	1	13	5	4	17
Ottawa.....	38	23	4	6	4	8	0	2	4	4	11	0	22
Pawnee.....	37	46	8	2	0	0	0	0	3	158	8	0	1
Phillips.....	40	2	4	0	4	0	0	0	5	10	21	3	6
Pottawatomie.....	48	55	16	4	4	0	0	0	2	17	13	3	16
Pratt.....	57	50	7	1	12	0	0	0	6	16	16	8	0
Rawlins.....	28	23	5	3	3	4	0	1	0	3	0	0	9
Reno.....	175	126	59	30	54	107	0	0	48	75	84	17	54
Republic.....	58	54	7	4	5	0	0	0	1	0	19	3	19
Rice.....	52	52	8	8	17	7	0	0	10	17	23	4	61

TABLE C-1.—CONCLUDED. Summary of Business Handled—Year Ending June 30, 1958

COUNTIES	Estates of decedents		Guardianships		Trusts under supervision	Juvenile cases	Habeas corpus hearings	Orders in absence of district judge	Adoption proceedings	Insanity hearings	Determination of descent	Miscellaneous	Foreign transcripts
	Opened during year	Closed during year	Opened during year	Closed during year									
Riley.....	48	63	17	11	9	49	0	1	29	36	19	8	18
Rooks.....	32	30	11	4	0	0	0	0	4	8	14	2	27
Rush.....	37	20	8	3	3	0	0	0	4	5	9	2	11
Russell.....	53	37	11	5	7	2	0	17	6	8	14	2	29
Saline.....	137	108	17	17	25	20	1	0	20	34	28	0	23
Scott.....	9	15	7	3	2	9	0	4	6	4	4	1	11
Sedgwick.....	550	400	208	47	50	853	0	0	350	294	125	7	11
Seward.....	27	17	9	2	9	24	0	10	6	11	10	0	19
Shawnee.....	286	234	130	59	82	186	0	0	103	553	121	0	29
Sheridan.....	18	13	4	3	3	0	0	0	1	6	6	0	13
Sherman.....	25	18	3	2	6	14	0	0	4	6	10	0	26
Smith.....	36	30	8	6	3	3	0	0	3	4	18	0	17
Stafford.....	39	34	7	8	7	0	1	9	3	8	26	4	35
Stanton.....	17	17	0	0	1	0	0	0	0	0	2	1	11
Stevens.....	15	19	2	1	2	0	0	0	1	0	5	0	24
Sumner.....	92	71	18	12	16	43	3	0	20	6	52	12	58
Thomas.....	22	29	4	1	0	0	0	0	3	4	9	0	17
Trego.....	32	23	26	0	3	3	0	0	8	5	10	0	11
Wallace.....	40	32	16	3	0	0	0	0	2	11	21	0	15
Wallace.....	9	6	1	0	0	0	0	0	0	0	0	0	11
Washington.....	70	29	33	9	3	0	0	0	5	5	20	0	18
White.....	10	5	5	2	0	0	0	0	3	3	2	0	7
Wilcox.....	52	55	55	5	5	1	0	13	8	20	32	3	22
Woodson.....	9	6	11	3	1	6	0	0	4	3	9	0	13
Wyandotte.....	356	228	83	35	26	380	0	0	159	299	211	0	55
Totals.....	5,571	4,607	2,034	735	897	2,135	9	165	1,468	2,555	2,401	277	1,802

PROBATE COURTS
TABLE C-2.—ESTATES OF DECEDENTS—YEAR ENDING JUNE 30, 1958

COUNTIES	Number pending July 1, 1957	Number filed since July 1, 1957	Total number	Wills		Bonds			Estates closed			Estates pending July 1, 1958		
				With	Without	Personal	Surety	None	Total number closed	Closed within 15 months		Total number pending	Pending less than 1 year	
										Number	Percent		Number	Percent
Allen.....	75	66	141	67	74	43	49	49	54	34	63	87	66	76
Anderson.....	29	35	64	32	32	33	12	19	23	16	69	41	35	55
Atchison.....	79	55	134	89	45	12	52	70	57	43	76	77	55	71
Barber.....	50	36	86	49	37	44	6	36	32	24	78	54	26	48
Barton.....	143	113	256	150	106	105	26	125	85	67	77	171	113	67
Bourbon.....	65	46	111	58	53	22	31	58	37	19	51	74	46	62
Brown.....	59	49	108	50	58	40	30	38	38	32	81	70	49	70
Butler.....	137	73	210	121	89	73	40	97	60	42	70	180	73	49
Chase.....	27	17	44	15	29	7	27	10	15	8	53	29	17	58
Chautauqua.....	41	20	61	29	32	15	23	23	24	16	66%	37	20	54
Cherokee.....	93	71	164	67	97	62	42	60	51	42	82	113	71	63
Cheyenne.....	30	18	48	21	27	18	16	14	18	13	72	30	18	30
Clark.....	24	16	40	26	14	12	10	18	9	8	88	31	16	51
Clay.....	75	59	134	72	62	70	20	44	53	44	83	81	59	73
Cloud.....	83	54	137	83	54	42	29	66	51	34	68	86	53	62
Coffey.....	47	43	90	38	52	23	36	31	36	33	92	54	43	79
Comanche.....	5	11	16	11	5	3	3	10	4	4	100	12	11	62
Cowley.....	160	115	275	165	110	102	62	111	101	74	73	174	113	98
Crawford.....	153	65	218	98	120	50	72	96	85	49	58	133	65	68
Decatur.....	16	20	36	19	17	17	6	13	15	15	100	21	20	99
Dickinson.....	73	58	131	78	53	39	35	57	66	65	98	65	58	89
Doniphan.....	34	49	83	40	43	44	6	33	22	17	77	61	49	80
Douglas.....	64	59	123	75	48	0	55	68	64	42	66	59	39	100
Edwards.....	30	32	62	29	33	17	13	32	19	11	63	43	32	44
Ft.K.....	39	25	64	35	29	33	5	26	21	15	76	43	23	53

TABLE C-2.—CONTINUED. Estates of Decedents—Year Ending June 30, 1958

COUNTIES	Number pending July 1, 1957	Number filed since July 1, 1957	Total number	Wills		Bonds			Estates closed			Estates pending July 1, 1958		
				With	Without	Personal	Surety	None	Total number closed	Closed within 15 months		Total number pending	Pending less than 1 year	
										Number	Percent			Number
Ellis.....	84	53	137	80	57	39	12	86	44	38	86	93	53	57
Ellsworth.....	37	51	88	43	45	43	5	40	33	28	33	65	51	93
Finney.....	57	26	83	34	35	52	7	24	31	19	61	82	26	50
Ford.....	57	44	101	62	39	20	31	50	37	26	70	64	44	57
Franklin.....	60	43	103	54	49	36	27	40	46	33	72	57	43	75
Geary.....	72	41	113	63	50	38	25	50	34	19	56	79	41	52
Gove.....	17	8	25	14	11	8	8	9	11	9	82	14	8	38
Graham.....	42	39	81	39	42	9	31	41	24	24	100	57	39	88
Grant.....	15	2	17	9	8	0	12	10	5	4	80	12	2	10
Gray.....	9	28	37	28	9	4	13	201	9	6	66%	28	28	100
Greeley.....	16	6	22	9	13	14	0	8	3	2	66%	19	6	31
Greenwood.....	61	34	95	45	50	49	19	27	47	40	89	48	34	73
Hamilton.....	20	11	31	9	22	9	10	12	8	3	37	28	11	48
Harper.....	64	42	106	72	34	36	10	60	48	39	81	58	42	72
Harvey.....	93	69	162	103	59	35	38	89	51	31	81	111	69	62
Haskell.....	15	11	26	14	12	8	3	15	9	6	66%	17	11	65
Hodgeman.....	25	17	42	18	24	20	8	14	10	7	70	32	17	53
Jackson.....	35	28	63	32	31	19	17	27	22	22	73	36	28	84
Jefferson.....	36	38	74	38	36	30	14	30	25	15	60	49	26	75
Jewell.....	43	35	78	40	38	29	23	24	28	23	82	50	35	70
Johnson.....	214	113	327	207	120	54	86	187	100	70	70	227	112	45
Keary.....	13	12	25	7	18	1	21	8	9	2	33%	19	12	63
Kingman.....	66	44	110	72	38	58	0	52	38	28	74	72	44	61
Kiowa.....	22	17	39	20	19	17	4	18	18	7	73	26	22	85
Labette.....	88	63	151	77	74	36	44	71	48	33	68	103	64	62
Lane.....	14	15	29	19	10	11	3	15	9	7	77	20	15	75
Leavenworth.....	146	93	239	135	104	33	72	184	84	56	67	155	92	59
Lincolph.....	42	28	70	43	43	48	7	14	30	27	90	40	28	70
Linn.....	21	25	46	18	28	29	7	10	25	23	92	21	21	100
Logan.....	8	6	14	5	9	11	2	1	8	7	87	6	6	100

TABLE C-2.—CONTINUED. Estates of Decedents—Year Ending June 30, 1958

COUNTRIES	Number pending July 1, 1957	Number filed since July 1, 1957	Wills		Bonds			Estates closed		Estates pending July 1, 1958					
			Total number	With	Without	Personal	Surety	None	Closed within 15 months		Total number pending	Pending less than 1 year			
									Number	Percent		Number	Percent	Number	Percent
Lyon.....	93	65	158	73	85	53	54	51	66	47	71	65	92	65	71
Marion.....	71	47	118	74	44	41	31	46	44	31	70	47	74	47	63
Marshall.....	100	72	172	88	84	70	34	68	73	58	79	72	99	72	73
McPherson.....	88	9	172	90	89	102	8	69	62	48	77	91	117	91	77
Meade.....	28	7	35	23	12	9	3	23	19	15	89	7	16	7	44
Miami.....	71	42	113	62	51	30	42	41	59	43	73	42	54	42	77
Mitchell.....	66	52	121	62	59	61	23	37	47	32	68	55	74	55	74
Montgomery.....	158	92	251	123	128	17	149	85	93	66	70	93	158	93	59
Morris.....	22	23	47	26	21	0	22	25	16	14	88	31	31	25	80
Morrison.....	11	16	27	14	13	6	8	13	7	6	86	20	20	16	80
Nemaha.....	39	43	82	56	26	22	18	42	34	27	79	43	48	43	89
Nescho.....	94	60	154	63	91	45	47	62	63	55	87	60	91	60	61
Ness.....	32	56	88	33	26	16	22	21	20	16	80	32	39	32	43
Norton.....	77	22	96	52	44	23	40	33	29	17	58	29	67	29	43
Ossage.....	39	33	72	37	35	11	36	25	30	22	73	42	42	33	78
Osborne.....	58	49	107	45	62	41	29	37	42	30	71	49	65	49	75
Ottawa.....	39	38	77	37	40	42	12	23	23	20	88	38	54	38	70
Pawnee.....	72	37	109	64	45	40	20	49	46	32	69	37	63	37	59
Phillips.....	40	42	82	15	27	34	0	8	2	1	50	40	40	40	100
Pottawatomie.....	68	48	116	45	71	57	23	36	55	42	76	48	61	48	79
Pratt.....	87	57	144	81	63	73	2	69	50	32	64	57	94	57	60
Rawlins.....	38	28	66	31	35	57	9	0	23	17	74	43	43	28	65
Reno.....	230	173	405	221	184	94	97	214	126	98	98	175	279	175	63
Republic.....	192	58	150	73	77	80	20	50	54	35	65	58	96	58	60
Rice.....	108	52	160	79	81	44	38	78	52	40	77	52	108	52	48

TABLE C-2.—CONCLUDED. Estates of Decedents—Year Ending June 30, 1958

COUNTIES	Number pending July 1, 1957	Number filed since July 1, 1957	Total number	Wills		Bonds			Estates closed		Estates pending July 1, 1958			
				With	Without	Personal	Surety	None	Total number closed	Closed within 15 months		Total number pending	Pending less than 1 year	
										Number	Percent		Number	Percent
Riley.....	104	48	152	86	66	53	37	62	63	46	73	89	48	54
Rooks.....	47	42	10	40	49	45	9	37	30	22	73	39	42	73
Rush.....	34	32	66	35	31	24	5	48	27	14	70	36	32	79
Russell.....	54	53	107	48	54	54	5	48	37	24	65	70	53	76
Saline.....	176	137	313	186	127	99	80	134	108	76	70	205	137	67
Scott.....	18	9	27	18	9	1	10	16	15	11	73	12	9	75
Sedwick.....	837	550	1,387	804	583	568	199	620	407	220	57	987	550	46
Seward.....	30	27	57	41	16	8	19	30	17	10	59	40	27	68
Shawnee.....	442	286	728	403	325	83	328	317	234	151	64	494	286	58
Sheridan.....	16	18	34	12	22	18	7	7	13	7	54	21	18	83
Sherman.....	30	25	55	31	24	7	19	29	18	11	61	27	25	67
Smith.....	47	36	83	33	50	60	9	14	30	19	63	53	36	89
Stafford.....	77	39	116	68	48	36	17	63	34	21	63	82	39	47
Stanton.....	10	17	27	14	13	14	3	10	10	8	86	17	17	100
Stevens.....	12	12	24	11	13	8	6	10	9	3	33½	15	12	80
Sumner.....	93	92	185	115	70	27	65	93	71	42	59	114	92	81
Thomas.....	41	22	63	30	34	8	33	22	26	20	69	63	22	65
Trego.....	24	32	56	32	24	35	8	15	23	17	73	33	32	96
Wabunsee.....	41	40	81	37	44	48	8	23	32	23	72	49	40	82
Wallace.....	6	9	15	4	11	3	4	8	6	3	50	9	9	100
Washington.....	51	70	121	62	59	76	20	25	29	23	76	92	70	76
Wichita.....	8	10	18	9	9	10	1	7	5	5	100	13	10	77
Wilson.....	91	52	143	63	80	62	40	41	52	43	78	88	52	57
Woodson.....	8	9	17	7	10	3	7	7	6	6	100	11	9	82
Wyandotte.....	532	356	888	417	471	352	204	332	228	142	62	660	356	54
Totals.....	7,720	5,562	13,282	7,097	6,185	4,519	3,173	5,590	4,591	3,241	7,607½	8,691	5,550	7,264

COUNTY COURTS
TABLE C-3.—GUARDIANSHIPS AND TRUSTS—YEAR ENDING JUNE 30, 1958

COUNTIES	Guardianships										Trusts			
	Number pending July 1, 1957	Filed since July 1, 1957	Total number	Bonds			Inventory or account during year		Wards		Closed during year	Pending July 1, 1958	Number under supervision	Number of accounts during year
				Personal	Surety	None	Number	Percent of total	Minors	Insane or incompetent				
Allen.....	17	73	90	49	28	13	7	7	41	49	8	82	7	6
Anderson.....	5	51	56	30	24	2	28	50	28	28	5	51	3	2
Atchison.....	67	18	85	24	58	3	52	61	36	49	8	77	5	2
Barber.....	44	10	54	26	11	17	25	46	28	26	7	47	7	6
Barton.....	176	40	216	157	42	17	55	25	168	48	19	197	30	12
Bourbon.....	63	13	76	42	27	7	4	5	30	46	6	70	4	3
Brown.....	61	19	80	40	29	11	2	3	21	59	9	71	13	8
Butler.....	107	22	129	77	31	21	4	3	73	56	8	121	10	5
Chase.....	20	3	23	15	8	0	5	33½	6	17	1	22	3	2
Chautauqua.....	33	5	38	17	19	2	9	38	19	19	5	33	4	2
Cherokee.....	101	12	113	63	44	6	69	61	44	69	11	102	9	5
Cheyenne.....	9	6	15	11	3	1	10	66½	7	8	2	13	3	1
Clark.....	17	6	23	9	10	4	10	43	16	16	7	21	7	2
Clay.....	64	9	73	51	13	9	34	47	36	37	6	67	9	1
Cloud.....	74	13	87	55	28	4	45	52	33	54	5	82	12	7
Coffey.....	41	10	51	16	26	9	38	74	22	29	4	47	4	2
Comanche.....	0	7	7	5	1	1	1	1	4	3	0	0	0	0
Cowley.....	141	30	171	117	45	9	50	29	72	99	16	155	11	6
Crawford.....	141	42	183	62	99	22	81	43	71	112	12	171	8	4
Decatur.....	7	5	12	4	8	0	9	75	6	6	3	9	1	1
Dickinson.....	47	57	104	62	40	2	77	74	41	63	8	96	31	29
Doniphan.....	39	13	52	38	11	3	22	41	15	37	2	50	7	3
Douglas.....	10	25	35	0	24	11	27	77	16	19	8	27	12	3
Edwards.....	22	3	25	20	5	0	3	12	9	16	4	21	0	0
Elk.....	21	5	26	20	6	0	15	57	15	11	2	24	2	2

TABLE C-3.—CONTINUED. Guardianships and Trusts—Year Ending June 30, 1958

COUNTIES	Guardianships										Trusts			
	Number pending July 1, 1957	Filed since July 1, 1957	Total number	Bonds			Inventory or account during year		Wards		Closed during year	Pending July 1, 1958	Number under supervision	Number of accounts during year
				Personal	Surety	None	Number	Percent of total	Minors	Insane or incompetent				
Ellis.....	82	21	103	81	10	12	37	36	64	39	6	97	6	1
Ellsworth.....	50	11	61	53	8	0	45	74	44	17	2	59	2	4
Finney.....	68	6	74	71	3	0	14	18	42	32	5	59	2	3
Ford.....	49	13	62	24	34	14	39	62	33	29	13	53	17	11
Franklin.....	66	29	95	61	34	0	44	46	42	53		82		
Geary.....	68	19	87	44	36	7	29	33	44	43	7	80	6	5
Gove.....	15	1	16	15	1	0	4	25	8	8	0	16	0	0
Graham.....	4	6	10	0	4	6	0	0	1	9	2	8	3	0
Grant.....	3	2	5	1	4	0	0	0	3	2	1	4	3	1
Gray.....	11	4	15	8	6	1	5	33%	10	5	4	11	3	1
Greeley.....	3	2	5	3	1	1	2	40	4	1	1	4	2	2
Greenwood.....	36	6	42	22	19	1	19	9	19	23	0	42	2	2
Hamilton.....	9	3	12	4	3	5	0	0	11	1	0	12	2	2
Harper.....	50	8	58	36	11	11	31	53	30	28	9	49	17	8
Harvey.....	88	31	119	41	46	32	83	61	48	71	4	115	22	14
Haskell.....	6	10	16	6	4	6	5	31	13	3	5	11	0	0
Hodgeman.....	12	11	23	11	6	6	18	78	14	9	2	21	0	1
Jackson.....	31	15	46	34	8	4	4	27	9	37	2	43	6	5
Jefferson.....	69	19	88	50	31	7	31	45	22	66	2	83	2	1
Jewell.....	28	9	37	29	6	2	5	10	15	22	5	32	1	1
Johnson.....	130	96	226	72	105	49	8	3	154	72	26	200	50	20
Kearny.....	2	3	5	0	5	0	1	20	4	1	0	3	0	0
Kingman.....	58	13	71	62	5	4	33	46	37	34	2	65	3	2
Kiowa.....	14	14	28	22	6	0	8	28	8	20	2	26	1	1
Labette.....	78	17	95	38	42	15	63	64	34	61	10	85	11	8
Lane.....	5	0	5	4	1	0	3	60	4	1	0	5	0	0
Leavenworth.....	101	22	123	73	19	3	5	4	50	73	13	110	17	11
Lincoln.....	21	2	23	13	7	3	17	74	10	13	2	91	2	2
Linn.....	16	7	23	21	0	2	2	9	12	11	3	20	7	4
Logan.....	3	4	7	7	0	0	1	25	5	2	7	0	1	1

TABLE C-3.—CONTINUED. Guardianships and Trusts—Year Ending June 30, 1958

COUNTIES	Guardianships										Trusts			
	Number pending July 1, 1957	Filed since July 1, 1957	Total number	Bonds			Inventory or account during year		Wards		Closed during year	Pending July 1, 1958	Number under supervision	Number of accounts during year
				Personal	Surety	None	Number	Percent of total	Minors	Insane or incompetent				
Lyon.....	44	25	69	41	25	3	51	74	22	47	5	64	15	9
Marion.....	109	18	128	105	18	5	47	37	62	66	13	115	20	15
Marshall.....	66	18	84	62	19	3	36	43	29	55	9	75	10	5
McPherson.....	71	2	92	85	7	0	34	37	55	37	5	87	17	11
Meade.....	17	5	22	20	2	0	11	50	12	10	0	22	3	2
Miami.....	56	17	73	39	24	10	13	18	31	42	7	66	10	6
Mitchell.....	38	12	50	27	15	8	5	10	18	32	1	49	1	1
Montgomery.....	101	22	123	86	22	35	11	6	101	86	18	169	18	14
Morris.....	17	46	63	16	30	17	7	10	18	45	8	55	2	1
Morton.....	5	3	8	3	4	1	4	50	5	3	3	5	1	1
Nemaha.....	26	28	54	34	20	0	1	1	18	36	1	53	8	5
Neosho.....	81	17	98	46	44	7	8	8	35	63	19	79	4	6
Ness.....	3	6	9	26	8	1	14	40	25	10	6	29	4	3
Norton.....	33	0	47	21	19	7	5	10	29	18	5	42	2	2
Osage.....	24	6	30	11	16	3	17	56%	9	21	10	20	12	7
Osborne.....	20	4	43	24	11	8	22	51	24	19	2	41	6	3
Ottawa.....	28	1	29	17	12	0	18	62	8	21	6	23	4	4
Pawnee.....	16	8	24	3	19	2	18	75	10	14	2	22	0	0
Phillips.....	0	0	0	0	0	0	0	0	0	0	0	0	0	0
Pottawatomie.....	38	16	54	46	8	0	48	88	12	42	4	50	4	2
Pratt.....	54	7	61	57	3	1	26	43	46	15	1	60	12	6
Rawlins.....	31	28	59	28	8	0	19	53	24	12	3	33	8	5
Keno.....	221	59	280	114	95	71	117	41	155	125	30	250	54	23
Republic.....	53	7	60	38	19	3	14	24	26	34	7	33	5	3
Rice.....	62	8	70	38	18	14	1	1	36	34	8	62	17	10

TABLE C-3.—CONCLUDED. Guardianships and Trusts—Year Ending June 30, 1958

COUNTIES	Guardianships										Trusts			
	Number pending July 1, 1957	Filed since July 1, 1957	Total number	Bonds			Inventory or account during year		Wards		Closed during year	Pending July 1, 1958	Number under supervision	Number of accounts during year
				Personal	Surety	None	Number	Percent of total	Minors	Insane or incompetent				
Riley.....	104	17	121	87	32	2	42	35	57	64	11	110	9	8
Rooks.....	29	11	40	33	6	1	3	7	20	20	4	36	0	0
Rush.....	33	8	41	33	6	1	1	1	32	9	3	38	3	3
Russell.....	66	11	77	58	14	5	44	58	53	24	5	72	7	5
Saline.....	91	17	108	44	58	6	18	16	56	52	17	91	25	21
Scott.....	11	7	18	1	13	5	3	16	11	7	3	15	2	1
Sedgewick.....	881	208	1,089	627	168	294	461	33	761	328	47	1,042	50	16
Seward.....	55	9	64	33	23	8	34	53	46	18	2	62	9	4
Shawnee.....	494	130	624	196	393	35	389	60	197	427	59	565	82	64
Sheridan.....	14	4	18	10	4	4	11	61	13	5	3	15	3	2
Sherman.....	19	3	22	8	11	3	7	32	19	3	2	20	6	1
Smith.....	30	3	33	35	3	0	14	37	20	18	6	32	3	1
Stafford.....	49	7	56	39	15	2	4	7	22	34	8	48	7	6
Stanton.....	9	9	18	9	10	0	0	0	8	9	0	9	1	1
Stevens.....	16	2	18	9	8	1	0	0	12	6	1	17	2	2
Sumner.....	113	18	131	55	60	16	12	9	62	69	12	119	16	11
Thomas.....	10	4	14	6	4	4	2	58	10	4	0	13	0	0
Trego.....	9	26	35	27	7	1	8	5	22	13	0	35	3	2
Wabauwsee.....	17	16	33	23	5	5	3	24	9	24	3	30	0	0
Wallace.....	4	1	5	0	3	2	3	60	4	1	0	5	0	0
Washington.....	34	9	43	30	13	0	3	9	18	25	7	36	3	2
Wichita.....	4	5	9	4	6	0	6	33 1/2	4	5	2	7	0	0
Wilson.....	11	55	66	48	16	7	31	47	36	30	5	61	5	5
Woodson.....	12	11	23	10	10	3	19	83	3	20	3	20	1	1
Wyandotte.....	401	83	484	281	169	34	254	52	248	236	35	449	26	10
Totals.....	6,244	1,992	8,236	4,487	2,788	1,011	3,099	3,757 1/2	4,182	4,054	730	7,506	894	539

COUNTY COURTS
TABLE D-1.—DISPOSITION OF CIVIL CASES—YEAR ENDING JUNE 30, 1958

COUNTIES	Total number cases	Cases dismissed	Cases not con- tested	Trials			Number pend- ing	Appeal to district court	Garnish- ments	Attach- ments	Replevin	For- cible detainer
				Total number	By							
					court	jury						
Allen	47	14	18	8	8	0	7	1	4	9	3	2
Anderson	42	10	25	5	5	0	2	0	6	7	1	0
Barber	47	0	33	5	5	0	9	0	7	7	0	0
Barton	75	17	24	8	8	0	26	3	8	0	0	0
Brown	30	9	6	2	2	0	13	0	8	1	0	0
Butler	333	73	77	93	92	1	90	2	143	3	0	0
Cheyenne	2	2	0	0	0	0	0	0	0	0	0	0
Clark	7	2	1	0	0	0	4	0	0	0	0	0
Clay	8	1	7	0	0	0	0	0	2	1	1	0
Cloud	16	3	8	3	2	1	2	1	3	0	0	0
Coffey	17	8	7	2	2	0	0	0	1	0	0	0
Comanche	7	2	4	1	1	0	0	0	0	0	0	0
Conatur	16	0	16	0	0	0	0	0	3	0	0	0
Dickinson	44	8	27	6	6	0	3	1	5	2	1	3
Doniphan	30	4	8	2	1	1	16	0	4	2	1	0
Douglas	249	56	91	21	21	0	81	2	77	0	2	1
Edwards	10	2	6	0	0	0	2	0	0	0	1	0
Ellis	73	25	21	2	2	0	25	1	5	0	0	0
Ellsworth	15	2	8	0	0	0	5	0	0	1	0	0
Finney	88	28	0	40	36	4	20	1	10	1	0	0
Ford	132	41	26	20	20	0	45	1	45	7	2	0
Franklin	73	26	19	9	9	0	28	0	3	0	1	0
Geary	104	24	43	9	9	0	28	2	0	0	6	0
Gove	2	0	1	0	0	0	1	0	0	0	0	0
Graham	28	1	27	0	0	0	0	0	13	4	0	0

JUDICIAL COUNCIL BULLETIN

TABLE D-1.—CONTINUED. Disposition of Civil Cases—Year Ending June 30, 1958

COUNTRIES	Total number cases	Cases dismissed	Cases not con- tested	Trials			Number pend- ing	Appeal to district court	Garnish- ments	Attach- ments	Replevin	For- cible detainer
				Total number	By							
					court	jury						
Greenwood.....	188	18	122	12	0	36	0	26	2	2	0	
Harper.....	38	17	18	2	0	1	0	6	1	1	0	
Harvey.....	83	18	31	9	1	24	1	16	0	0	0	
Hodgeman.....	5	1	2	0	0	2	0	1	1	0	0	
Jackson.....	29	5	16	1	0	7	0	1	2	1	0	
Jewell.....	5	1	1	2	0	1	0	5	2	0	0	
Kearny.....	9	2	6	0	0	1	0	2	1	0	0	
Kingman.....	32	3	12	0	0	17	0	2	0	0	0	
Kiowa.....	2	2	0	0	0	0	0	1	1	0	0	
Lane.....	4	0	4	0	0	0	0	0	0	0	0	
Lincoln.....	6	2	2	1	0	1	0	1	0	0	0	
Lyon.....	88	0	46	6	6	36	3	32	4	0	0	
Marion.....	35	23	11	1	0	0	0	7	1	0	2	
Marshall.....	49	24	11	13	1	0	2	7	1	0	0	
Meade.....	22	6	9	6	0	1	2	9	0	0	0	
Miami.....	58	10	16	13	0	19	2	6	1	1	0	
Mitchell.....	12	3	9	0	0	0	0	0	0	0	0	
Morris.....	20	4	10	1	1	5	1	3	0	0	0	
Ness.....	5	2	1	1	0	1	0	0	1	0	0	
Norton.....	22	7	9	0	0	6	0	8	0	0	1	
Osage.....	48	14	20	3	3	11	1	7	2	0	0	
Osborne.....	14	4	3	0	0	7	0	3	0	0	0	
Pawnee.....	39	5	24	9	8	1	0	7	1	1	0	
Phillips.....	8	5	0	0	0	3	0	1	1	0	0	
Pottawatomie.....	32	5	1	20	0	6	0	4	1	2	0	

TABLE D-1.—CONCLUDED. Disposition of Civil Cases—Year Ending June 30, 1958

COUNTIES	Total number cases	Cases dismissed	Cases not con- tested	Trials			Number pending	Appeal to district court	Garnish- ments	Attach- ments	Replevin	For- cible detainer
				Total number	By court	By jury						
Pratt.....	51	13	31	2	1	1	5	2	4	1	4	0
Rawlins.....	3	3	0	0	0	0	0	0	0	0	0	0
Republic.....	24	9	4	3	3	0	8	0	0	0	0	0
Rice.....	39	15	9	3	2	1	12	1	7	1	3	0
Riley.....	74	22	12	3	3	0	37	1	7	1	0	0
Rooks.....	38	12	7	7	7	0	12	2	9	8	0	0
Rush.....	22	8	3	0	0	0	11	0	2	1	1	0
Russell.....	34	9	12	1	1	0	12	1	2	2	1	0
Scott.....	9	0	4	5	5	0	0	1	2	1	0	0
Seward.....	50	20	15	4	4	0	11	0	12	6	1	0
Sheridan.....	6	2	3	0	0	0	1	0	1	0	0	0
Sherman.....	23	6	10	2	2	0	5	0	5	0	1	0
Smith.....	7	4	4	0	0	0	2	0	0	1	0	0
Stafford.....	32	8	19	1	1	0	4	1	0	0	1	1
Stevens.....	12	5	1	6	5	1	0	0	6	0	0	0
Thomas.....	25	8	9	1	0	1	7	0	0	0	2	0
Trego.....	18	4	5	7	7	0	2	2	0	1	0	1
Wabunsee.....	13	6	3	2	2	0	0	0	2	0	0	0
Wallace.....	3	2	0	0	0	0	1	0	0	0	0	0
Washington.....	10	4	5	0	0	0	0	0	3	0	0	0
Woodson.....	35	6	26	1	1	0	2	0	1	0	0	0
Totals.....	2,876	702	1,069	377	363	14	728	39	580	82	43	13

COUNTY COURTS
 TABLE D-2.—DISPOSITION OF CRIMINAL CASES—YEAR ENDING JUNE 30, 1958

COUNTIES	Total number cases	Cases not tried		Bound over to district court	Trials			Paroles granted	Paroles revoked	Pending
		Number dismissed	Plea of guilty		Total number	Acquitted	Convicted			
Allen.....	225	4	176	19	18	2	16	38	1	8
Anderson.....	674	12	557	11	5	1	4	32	0	29
Barber.....	279	4	206	8	2	0	2	12	1	59
Barton.....	22	0	20	1	1	0	1	0	0	0
Brown.....	320	5	263	17	10	1	9	2	0	25
Butler.....	816	137	252	122	135	4	131	59	0	170
Cheyenne.....	185	11	97	2	0	0	0	0	0	3
Clark.....	107	6	97	2	0	0	0	4	0	12
Clay.....	241	6	224	5	1	0	1	4	0	8
Cloud.....	165	19	118	4	0	0	0	12	0	24
Coffey.....	737	17	675	4	13	1	12	4	0	28
Comanche.....	76	0	168	0	10	1	9	2	0	0
DePue.....	142	11	107	0	1	0	1	1	0	0
Dickinson.....	148	27	97	11	3	2	1	22	1	4
Doniphan.....	185	8	88	5	3	0	3	11	1	31
Douglas.....	930	77	706	39	16	6	10	46	2	92
Edwards.....	306	56	213	0	1	0	1	14	0	28
Ellis.....	686	13	533	15	13	3	10	11	0	112
Ellsworth.....	538	24	503	5	5	1	4	3	0	5
Finney.....	919	35	655	66	13	6	7	7	0	154
Ford.....	503	82	284	23	11	4	7	7	0	93
Franklin.....	513	80	324	22	21	4	17	28	0	57
Geary.....	239	20	84	49	14	0	14	34	0	67
Gove.....	52	5	38	0	0	0	0	3	1	6
Graham.....	214	7	160	13	0	0	0	4	0	34

TABLE D-2.—CONTINUED. Disposition of Criminal Cases—Year Ending June 30, 1958

COUNTRIES	Total number cases	Cases not tried		Bound over to district court	Trials			Paroles granted	Paroles revoked	Pending
		Number dismissed	Plea of guilty		Total number	Acquitted	Convicted			
Greenwood.....	277	21	193	10	9	3	6	54	2	44
Harper.....	186	25	132	17	0	0	0	15	2	12
Harvey.....	1,361	102	1,070	35	37	3	34	35	2	117
Hodgeman.....	114	3	93	6	0	0	0	4	0	12
Jackson.....	17	6	7	2	0	0	0	2	0	2
Jewell.....	500	16	463	4	3	1	2	14	1	14
Kearny.....	264	3	243	4	2	0	2	6	1	12
Kirgman.....	584	10	491	13	14	2	12	27	1	56
Kiowa.....	335	0	316	7	1	1	0	3	0	11
Lane.....	55	0	40	1	2	1	1	0	0	12
Lincoln.....	157	26	113	6	3	0	3	0	0	9
Lyon.....	650	38	534	15	3	2	1	25	0	60
Marion.....	215	59	126	7	2	1	1	17	0	21
Marshall.....	219	10	195	6	8	0	8	18	0	0
Meade.....	128	2	122	0	0	0	0	14	0	4
Miami.....	771	21	677	19	11	2	9	22	0	43
Mitchell.....	401	13	320	12	6	3	3	48	0	50
Morris.....	366	37	281	15	7	0	7	17	0	26
Ness.....	213	24	186	3	3	1	2	2	0	2
Norton.....	152	11	130	3	3	1	0	4	0	7
Osage.....	716	18	641	16	13	0	13	48	0	28
Osborne.....	113	1	112	0	0	0	0	0	0	0
Pawnee.....	333	21	249	27	5	0	5	9	0	31
Phillips.....	128	0	123	5	0	0	0	123	0	0
Pottawatomie.....	526	26	388	11	25	0	25	10	0	76

TABLE D-2.—CONCLUDED. Disposition of Criminal Cases—Year Ending June 30, 1958

COUNTIES	Total number cases	Cases not tried		Bound over to district court	Trials			Paroles granted	Paroles revoked	Pending
		Number dismissed	Plea of guilty		Total number	Acquitted	Convicted			
Pratt.....	536	28	423	20	13	5	8	34	1	52
Rawlins.....	84	3	76	1	1	0	1	7	0	3
Republic.....	258	6	214	8	1	0	1	7	0	29
Rice.....	569	33	471	10	12	0	12	8	3	43
Riley.....	411	12	266	28	3	0	3	9	1	102
Rooks.....	214	21	133	7	8	0	8	8	0	45
Rush.....	172	3	128	2	3	2	1	3	0	36
Russell.....	52	3	36	1	1	0	1	0	0	11
Scott.....	120	5	89	7	1	0	1	5	0	18
Seward.....	796	90	508	41	12	3	9	34	0	145
Sheridan.....	167	0	153	0	0	0	0	2	0	14
Stetson.....	287	6	231	6	3	2	1	12	0	21
Stewart.....	201	10	68	1	1	0	1	15	1	21
Stafford.....	394	19	290	14	4	0	4	30	0	27
Stevens.....	315	0	312	1	2	0	2	28	0	0
Thomas.....	585	21	455	3	0	0	0	1	0	56
Trego.....	265	3	215	4	1	0	0	5	0	29
Wagoner.....	369	51	231	10	4	4	0	10	0	23
Wallace.....	90	3	42	4	0	0	0	3	0	7
Washington.....	299	0	194	6	2	0	2	0	0	17
Woodson.....	385	2	363	2	4	0	4	12	0	14
Totals.....	23,921	1,469	18,644	875	521	72	449	1,110	24	2,412

CITY COURTS
TABLE E-1.—DISPOSITION OF CIVIL CASES—YEAR ENDING JUNE 30, 1958

Cities	Total number cases	Cases dismissed	Cases not con- tested	Trials			Number pend- ing	Appeal to district court	Garnish- ments	Attach- ments	Replevin	For- cible detainer
				Total number	By court	By jury						
Arkansas City.....	238	41	29	13	13	0	155	3	77	2	0	0
Atchison.....	500	68	375	24	24	1	32	3	334	5	1	5
Chanute.....	51	10	27	3	3	0	11	1	12	0	1	1
Coffeyville.....	943	108	773	8	8	0	54	4	813	9	6	0
Hutchinson.....	482	123	203	29	29	0	127	10	85	1	17	0
Independence.....	79	16	56	5	5	1	1	0	47	0	3	0
Johnson County... (Magistrate)	1,164	451	346	44	44	0	323	9	228	3	24	27
Kansas City.....	4,095	281	2,195	532	532	6	1,081	40	1,259	9	229	185
Leavenworth.....	217	69	73	3	3	0	72	1	24	0	11	0
Pittsburg.....	148	22	94	28	28	0	4	5	61	10	11	0
Salina.....	280	74	98	27	26	1	81	3	85	0	4	0
Topeka.....	2,378	755	1,331	112	111	1	180	22	881	3	85	0
Wichita.....	7,951	1,320	3,032	339	339	0	3,260	50	4,357	14	381	0
Winfield.....	212	81	85	25	25	0	21	4	29	0	2	6
Totals.....	18,738	3,419	8,717	1,200	1,190	10	5,402	155	8,292	56	775	224

CITY COURTS
TABLE E-2.—DISPOSITION OF CRIMINAL CASES—YEAR ENDING JUNE 30, 1958

Cities	Total number cases	Cases not tried		Bound over to district court	Trials			Paroles granted	Paroles revoked	Pending
		Number dismissed	Plea of guilty		Total number	Acquitted	Convicted			
Arkansas City.....	546	52	400	23	25	8	17	41	2	46
Atchison.....	576	30	443	32	20	7	13	39	0	51
Chanute.....	250	17	207	10	8	2	6	2	0	8
Coffeyville.....	600	34	429	49	25	2	23	46	0	63
Hutchinson.....	1,774	119	1,287	113	56	7	49	85	0	199
Independence.....	421	57	300	44	11	1	10	121	4	9
Johnson County (Magistrate).....	3,251	319	2,565	72	66	18	48	92	0	229
Kansas City.....	1,030	450	128	132	56	33	23	56	1	264
Leavenworth.....	439	64	283	35	30	1	29	28	1	27
Pittsburg.....	370	29	288	32	17	5	12	16	2	4
Salina.....	1,046	62	578	56	132	24	108	44	0	218
Topeka.....	3,627	379	2,380	225	305	9	296	111	0	338
Wichita.....	3,912	457	1,756	289	529	34	495	25	1	881
Winfield.....	820	87	623	29	18	1	17	81	4	63
Totals.....	18,662	2,156	11,667	1,141	1,298	152	1,146	787	15	2,400

Please Help Us Keep Our Mailing List Up to Date

The JUDICIAL COUNCIL BULLETIN is published quarterly and mailed without charge to lawyers, courts, public officials, newspapers and libraries, who are or may be interested in our work. We are glad to add to our mailing list the name of any person who is interested in receiving the BULLETIN regularly. We will also send current numbers to persons making requests for them, and will furnish back numbers so far as available.

In order to save unnecessary printing expenses, we are constantly revising our mailing list, and are attempting to eliminate the names of persons who have died or moved out of the state or who have changed their addresses and are receiving the BULLETIN at the new address.

Please advise promptly if you have changed your address, giving the old address as well as the new. If you do not receive any current BULLETIN and wish to remain on the mailing list, please notify us to that effect. If you are receiving a BULLETIN addressed to some person who has died or moved away, please let us know and we will remove the name from the list.

Address all inquiries to THE JUDICIAL COUNCIL, STATE HOUSE, TOPEKA, KAN.



27-5743

MEMBERS OF THE JUDICIAL COUNCIL

ROBERT T. PRICE, <i>Chairman</i> . (1954-)	Topeka
Justice of the Supreme Court.	
WALTER G. THIELE, <i>Secretary</i> . (1957-)	Topeka
JAMES E. TAYLOR. (1941-)	Sharon Springs
ROBERT H. COBEAN. (1947-)	Wellington
A. K. STAVELY. (1951-)	Lyndon
Judge Thirty-fifth Judicial District.	
J. WILLARD HAYNES. (1951-)	Kansas City
MAX L. DICE. (1957-)	Johnson
Chairman House Judiciary Committee.	
JOSEPH J. DAWES. (1953-)	Leavenworth
Judge First Judicial District.	
WILFORD RIEGLE. (1953-)	Emporia
Chairman Senate Judiciary Committee.	

FORMER MEMBERS OF THE JUDICIAL COUNCIL

W. W. HARVEY, <i>Chairman</i> . (1927-1941)	Ashland
Justice of the Supreme Court.	
WALTER G. THIELE, <i>Chairman</i> . (1941-1953)	Lawrence
Justice of the Supreme Court.	
J. C. RUPPENTHAL, <i>Secretary</i> . (1927-1941)	Russell
RANDAL C. HARVEY, <i>Secretary</i> . (1941-1953)	Topeka
WILLIAM M. MILLS, JR., <i>Secretary</i> . (1953-1957)	Topeka
EDWARD L. FISCHER. (1927-1943)	Kansas City
ROBERT C. FOULSTON. (1927-1943)	Wichita
CHARLES L. HUNT. (1927-1941)	Concordia
CHESTER STEVENS. (1927-1941)	Independence
JOHN W. DAVIS. (1927-1933)	Greensburg
C. W. BURCH. (1927-1931)	Salina
ARTHUR C. SCATES. (1927-1929)	Dodge City
WALTER PLEASANT. (1929-1931)	Ottawa
ROSCOE H. WILSON. (1931-1933)	Jetmore
GEORGE AUSTIN BROWN. (1931-1933)	Wichita
RAY H. BEALS. (1933-1938)	St. John
HAL E. HARLAN. (1933-1935)	Manhattan
SCHUYLER C. BLOSS. (1933-1935)	Winfield
E. H. REES. (1935-1937)	Emporia
O. P. MAY. (1935-1937)	Atchison
KIRKE W. DALE. (1937-1941)	Arkansas City
HARRY W. FISHER. (1937-1939)	Fort Scott
GEORGE TEMPLAR. (1939-1941, 1943-1947, 1953)	Arkansas City
EDGAR C. BENNETT. (1938-1951)	Marysville
SAMUEL E. BARTLETT. (1941-1951)	Wichita
PAUL R. WUNSCH. (1941-1943)	Kingman
WALTER F. JONES. (1941-1945)	Hutchinson
GROVER PIERPONT. (1943-1944)	Wichita
I. M. PLATT. (1943-1945)	Junction City
C. A. SPENCER. (1944-1951)	Oakley
CHARLES VANCE. (1945-1947)	Liberal
RICHARD L. BECKER. (1949-1951)	Coffeyville
W. D. VANCE. (1951-1952)	Belleville
JOHN A. ETLING. (1945-1953)	Kinsley
DALE M. BRYANT. (1947-1949, 1951-1953)	Wichita
FRANKLIN B. HETTINGER. (1952-1953)	Hutchinson
JOHN H. MURRAY. (1953-1957)	Leavenworth

KANSAS JUDICIAL COUNCIL
STATE HOUSE
TOPEKA, KANSAS
RETURN POSTAGE GUARANTEED

Sec. 34.66, P. L. & R.
U. S. POSTAGE

PAID

Topeka, Kansas
Permit No. 421

PRINTED IN
THE STATE PRINTING PLANT
TOPEKA, KANSAS

1958



27-5743